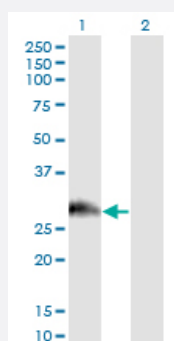


# PAGE1 monoclonal antibody (M01), clone 6G6

Catalog # H00008712-M01

Size 100 ug

## Applications

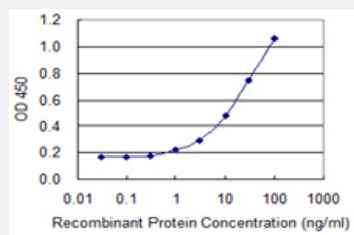


### Western Blot (Transfected lysate)

Western Blot analysis of PAGE1 expression in transfected 293T cell line by PAGE1 monoclonal antibody (M01), clone 6G6.

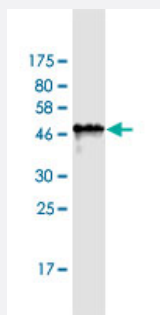
Lane 1: PAGE1 transfected lysate (16.2 KDa).

Lane 2: Non-transfected lysate.



### Sandwich ELISA (Recombinant protein)

Detection limit for recombinant GST tagged PAGE1 is 0.3 ng/ml as a capture antibody.



Western Blot detection against Immunogen (42.6 KDa).

## Specification

### Product Description

Mouse monoclonal antibody raised against a full-length recombinant PAGE1.

<b>Immunogen</b>	PAGE1 (NP_003776.2, 1 a.a. ~ 146 a.a) full-length recombinant protein with GST tag. MW of the GST tag alone is 26 KDa.
<b>Sequence</b>	MGFLRRLIYRRRPMIYVESSEESSDEQPDEVESPTQSQDSTPAEEREDEGASAAQGQPEADS QELVQPKTGCELGDGPDTKRVCLRNEEQMKLPAEGPEPEADSQEQVHPKTGCERGDGPDVQE LGLPNPEEVKTPEEDEGQSQP
<b>Host</b>	Mouse
<b>Reactivity</b>	Human
<b>Isotype</b>	IgG2a Kappa
<b>Quality Control Testing</b>	Antibody Reactive Against Recombinant Protein. Western Blot detection against Immunogen (42.6 KDa) .
<b>Storage Buffer</b>	In 1x PBS, pH 7.4
<b>Storage Instruction</b>	Store at -20°C or lower. Aliquot to avoid repeated freezing and thawing.

## Applications

- Western Blot (Transfected lysate)

Western Blot analysis of PAGE1 expression in transfected 293T cell line by PAGE1 monoclonal antibody (M01), clone 6G6.

Lane 1: PAGE1 transfected lysate(16.2 KDa).

Lane 2: Non-transfected lysate.

[Protocol Download](#)

- Western Blot (Recombinant protein)

[Protocol Download](#)

- Sandwich ELISA (Recombinant protein)

Detection limit for recombinant GST tagged PAGE1 is 0.3 ng/ml as a capture antibody.

[Protocol Download](#)

- ELISA

## Gene Info — PAGE1

Entrez GeneID

[8712](#)

GeneBank Accession#	<a href="#">NM_003785.3</a>
Protein Accession#	<a href="#">NP_003776.2</a>
Gene Name	PAGE1
Gene Alias	GAGE-9, GAGEB1, PAGE-1
Gene Description	P antigen family, member 1 (prostate associated)
Omim ID	<a href="#">300288</a>
Gene Ontology	<a href="#">Hyperlink</a>
Gene Summary	This gene belongs to a family of genes that are expressed in a variety of tumors but not in normal tissues, except for the testis. Unlike the other gene family members, this gene does not encode an antigenic peptide. Nothing is presently known about the function of this protein. [provided by RefSeq]
Other Designations	G antigen, family B, 1 (prostate associated) OTTHUMP00000032034 P antigen family, member 1  prostate associated gene 1