

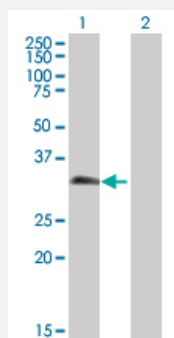
MaxPab®

PAGE1 purified MaxPab mouse polyclonal antibody (B01P)

Catalog # H00008712-B01P

Size 50 ug

Applications

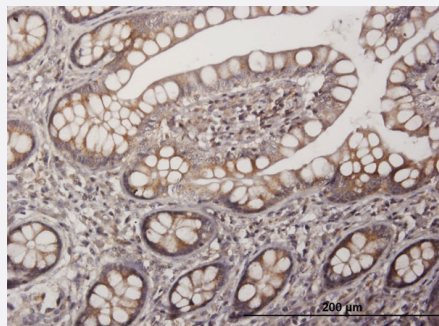


Western Blot (Transfected lysate)

Western Blot analysis of PAGE1 expression in transfected 293T cell line ([H00008712-T01](#)) by PAGE1 MaxPab polyclonal antibody.

Lane 1: PAGE1 transfected lysate(16.06 KDa).

Lane 2: Non-transfected lysate.



Immunohistochemistry (Formalin/PFA-fixed paraffin-embedded sections)

Immunoperoxidase of purified MaxPab antibody to PAGE1 on formalin-fixed paraffin-embedded human small Intestine. [antibody concentration 3 ug/ml]

Specification

Product Description	Mouse polyclonal antibody raised against a full-length human PAGE1 protein.
Immunogen	PAGE1 (NP_003776.2, 1 a.a. ~ 146 a.a) full-length human protein.
Sequence	MGFLRRLIYRRRPMIYVESSEESSDEQPDEVESPTQSQDSTPAEEREDEGASAAQQQEPEADS QELVQPKTGCELGDGPDTRVCLRNEEQMKLPAEGPEPEADSQEQVHPKTGCERGDGPDVQE LGLPNPEEVKTPEEDEGQSQP
Host	Mouse
Reactivity	Human

Quality Control Testing	Antibody reactive against mammalian transfected lysate.
Storage Buffer	In 1x PBS, pH 7.4
Storage Instruction	Store at -20°C or lower. Aliquot to avoid repeated freezing and thawing.

Applications

- Western Blot (Transfected lysate)

Western Blot analysis of PAGE1 expression in transfected 293T cell line ([H00008712-T01](#)) by PAGE1 MaxPab polyclonal antibody.

Lane 1: PAGE1 transfected lysate(16.06 KDa).

Lane 2: Non-transfected lysate.

[Protocol Download](#)

- Immunohistochemistry (Formalin/PFA-fixed paraffin-embedded sections)

Immunoperoxidase of purified MaxPab antibody to PAGE1 on formalin-fixed paraffin-embedded human small intestine. [antibody concentration 3 ug/ml]

[Protocol Download](#)

Gene Info — PAGE1

Entrez GeneID	8712
GeneBank Accession#	NM_003785.3
Protein Accession#	NP_003776.2
Gene Name	PAGE1
Gene Alias	GAGE-9, GAGEB1, PAGE-1
Gene Description	P antigen family, member 1 (prostate associated)
Omim ID	300288
Gene Ontology	Hyperlink
Gene Summary	This gene belongs to a family of genes that are expressed in a variety of tumors but not in normal tissues, except for the testis. Unlike the other gene family members, this gene does not encode an antigenic peptide. Nothing is presently known about the function of this protein. [provided by RefSeq]

Other Designations

G antigen, family B, 1 (prostate associated)|OTTHUMP00000032034|P antigen family, member 1
|prostate associated gene 1
