

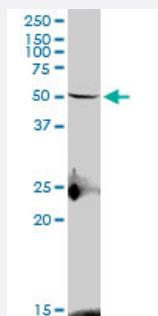
MaxPab®

## S1PR4 purified MaxPab mouse polyclonal antibody (B01P)

Catalog # H00008698-B01P

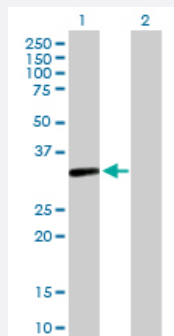
Size 50 ug

### Applications



#### Western Blot (Cell lysate)

S1PR4 MaxPab polyclonal antibody. Western Blot analysis of S1PR4 expression in Jurkat.



#### Western Blot (Transfected lysate)

Western Blot analysis of S1PR4 expression in transfected 293T cell line ([H00008698-T02](#)) by S1PR4 MaxPab polyclonal antibody.

Lane 1: EDG6 transfected lysate(42.24 KDa).

Lane 2: Non-transfected lysate.

### Specification

#### Product Description

Mouse polyclonal antibody raised against a full-length human S1PR4 protein.

#### Immunogen

S1PR4 (NP\_003766.1, 1 a.a. ~ 384 a.a) full-length human protein.

#### Sequence

MNATGTPVAPESCQQLAAGGHSRLVLHYNHSGRLAGRGGPEDGGLGALRGLSVAASCLVVLEN  
LLVLAAITSHMRSRRWVYYCLVNITLSDLLTGAAAYLANVLLSGARTFRLAPAQWFLREGLLFTALAA  
STFSLLFTAGERFATMVRPVAESGATKTSRVYGFGLCWLLAALLGMLPLLGWNCCLAFDRCSSL  
LPLYSKRYILFCLVIFAGVLATIMGLYGAIFRLVQASGQKAPRPAARRKARRLLKTVLMILLAFLVCW  
GPLFGLLLADVFGSNLWAEYLRGMDWILALAVLNSAVNPIIYSFRSREVCRAVLSFLCCGCLRLG  
MRGPGDCLARAVEAHSGASTTDSLRPRDSFRGSRSLSFMRREPLSSISSVRSI

#### Host

Mouse

Reactivity	Human
Quality Control Testing	Antibody reactive against mammalian transfected lysate.
Storage Buffer	In 1x PBS, pH 7.4
Storage Instruction	Store at -20°C or lower. Aliquot to avoid repeated freezing and thawing.

## Applications

- Western Blot (Cell lysate)

S1PR4 MaxPab polyclonal antibody. Western Blot analysis of S1PR4 expression in Jurkat.

[Protocol Download](#)

- Western Blot (Transfected lysate)

Western Blot analysis of S1PR4 expression in transfected 293T cell line ([H00008698-T02](#)) by S1PR4 MaxPab polyclonal antibody.

Lane 1: EDG6 transfected lysate(42.24 KDa).

Lane 2: Non-transfected lysate.

[Protocol Download](#)

## Gene Info — S1PR4

Entrez GeneID	<a href="#">8698</a>
GeneBank Accession#	<a href="#">NM_003775</a>
Protein Accession#	<a href="#">NP_003766.1</a>
Gene Name	S1PR4
Gene Alias	EDG6, LPC1, S1P4, SLP4
Gene Description	sphingosine-1-phosphate receptor 4
Omim ID	<a href="#">603751</a>
Gene Ontology	<a href="#">Hyperlink</a>
Gene Summary	This gene is a member of the endothelial differentiation, G-protein-coupled (EDG)) receptor gene family. EDG receptors bind lysophospholipids or lysosphingolipids as ligands, and are involved in cell signalling in many different cell types. This EDG receptor gene is intronless and is specifically expressed in the lymphoid tissue. [provided by RefSeq

**Other Designations**

Sphingosine 1-phosphate receptor 4|Sphingosine 1-phosphate receptor Edg-6|endothelial differentiation, G protein coupled receptor 6|endothelial differentiation, G-protein-coupled receptor 6|endothelial differentiation, lysophosphatidic acid G-protein-coupled receptor 6|endothelial differentiation

**Pathway**

- [Neuroactive ligand-receptor interaction](#)