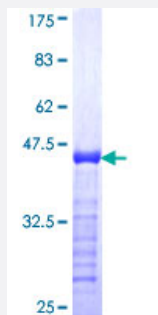


JRKL (Human) Recombinant Protein (Q01)

Catalog # H00008690-Q01

Size 25 ug, 10 ug

Applications



Specification

Product Description	Human JRKL partial ORF (NP_003763, 426 a.a. - 524 a.a.) recombinant protein with GST-tag at N-terminal.
Sequence	ENLEKWLEVDSTEPGYEVLTDSEIIRRAQGQADESSNEEEEEIELIPEKHINHAAALQWTENLLDYLEQQGDMILPDRLVIRKL RATIRNKQKMTKSSQ
Host	Wheat Germ (in vitro)
Theoretical MW (kDa)	36.63
Interspecies Antigen Sequence	Mouse (91); Rat (91)
Preparation Method	in vitro wheat germ expression system
Purification	Glutathione Sepharose 4 Fast Flow
Quality Control Testing	12.5% SDS-PAGE Stained with Coomassie Blue.
Storage Buffer	50 mM Tris-HCl, 10 mM reduced Glutathione, pH=8.0 in the elution buffer.
Storage Instruction	Store at -80°C. Aliquot to avoid repeated freezing and thawing.
Note	Best use within three months from the date of receipt of this protein.

Applications

- Enzyme-linked Immunoabsorbent Assay
- Western Blot (Recombinant protein)
- Antibody Production
- Protein Array

Gene Info — JRKL

Entrez GeneID	8690
GeneBank Accession#	NM_003772
Protein Accession#	NP_003763
Gene Name	JRKL
Gene Alias	HHMJG, MGC129608
Gene Description	jerky homolog-like (mouse)
Omim ID	603211
Gene Ontology	Hyperlink
Gene Summary	The function of this gene has not yet been defined, however, the encoded protein shares similarity with the human (41% identical) and mouse (34% identical) jerky gene products. This protein may act as a nuclear regulatory protein. [provided by RefSeq]
Other Designations	erky homolog-like jerky homolog-like