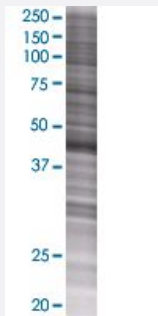


KRT36 293T Cell Transient Overexpression Lysate(Denatured)

Catalog # H00008689-T01

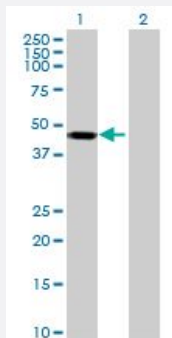
Size 100 uL

Applications



SDS-PAGE Gel

KRT36 transfected lysate.



Western Blot

Lane 1: KRT36 transfected lysate (47.5 KDa)

Lane 2: Non-transfected lysate.

Specification

| | |
|-------------------------------|------------------------|
| Transfected Cell Line | 293T |
| Plasmid | pCMV-KRT36 full-length |
| Host | Human |
| Theoretical MW (kDa) | 47.5 |
| Interspecies Antigen Sequence | Mouse (85); Rat (85) |

Quality Control Testing

Transient overexpression cell lysate was tested with Anti-KRT36 antibody ([H00008689-B01](#)) by Western Blots.
SDS-PAGE Gel
KRT36 transfected lysate.
Western Blot
Lane 1: KRT36 transfected lysate (47.5 KDa)
Lane 2: Non-transfected lysate.

Storage Buffer

1X Sample Buffer (50 mM Tris-HCl, 2% SDS, 10% glycerol, 300 mM 2-mercaptoethanol, 0.01% Bromophenol blue)

Storage Instruction

Store at -80°C. Aliquot to avoid repeated freezing and thawing.

Applications

- Western Blot

Gene Info — KRT36

Entrez GeneID[8689](#)**GeneBank Accession#**[BC043581](#)**Protein Accession#**[AAH43581](#)**Gene Name**

KRT36

Gene Alias

HA6, KRTHA6, hHa6

Gene Description

keratin 36

Omim ID[604540](#)**Gene Ontology**[Hyperlink](#)**Gene Summary**

The protein encoded by this gene is a member of the keratin gene family. This type I hair keratin is an acidic protein which heterodimerizes with type II keratins to form hair and nails. The type I hair keratins are clustered in a region of chromosome 17q12-q21 and have the same direction of transcription. [provided by RefSeq]

Other Designations

keratin, hair, acidic, 6|keratin, type I cuticular Ha6