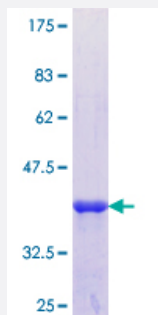


KRTHA6 (Human) Recombinant Protein (Q01)

Catalog # H00008689-Q01

Size 25 ug, 10 ug

Applications



Specification

Product Description	Human KRTHA6 partial ORF (NP_003762.1, 368 a.a. - 467 a.a.) recombinant protein with GST-tag at N-terminal.
Sequence	DLERQNQEYQVLLDVKARLEGEIATYRHLLEGEDCKLPPQPCATACKPVIRVPSVPPVPCVPSVPCTPAPQVGQTQIRTITEEIRDGKVISSREHVQSRPL
Host	Wheat Germ (in vitro)
Theoretical MW (kDa)	36.74
Interspecies Antigen Sequence	Mouse (73); Rat (77)
Preparation Method	in vitro wheat germ expression system
Purification	Glutathione Sepharose 4 Fast Flow
Quality Control Testing	12.5% SDS-PAGE Stained with Coomassie Blue.
Storage Buffer	50 mM Tris-HCl, 10 mM reduced Glutathione, pH=8.0 in the elution buffer.
Storage Instruction	Store at -80°C. Aliquot to avoid repeated freezing and thawing.
Note	Best use within three months from the date of receipt of this protein.

Applications

- Enzyme-linked Immunoabsorbent Assay
- Western Blot (Recombinant protein)
- Antibody Production
- Protein Array

Gene Info — KRT36

Entrez GeneID [8689](#)

GeneBank Accession# [NM_003771](#)

Protein Accession# [NP_003762.1](#)

Gene Name KRT36

Gene Alias HA6, KRTHA6, hHa6

Gene Description keratin 36

Omim ID [604540](#)

Gene Ontology [Hyperlink](#)

Gene Summary The protein encoded by this gene is a member of the keratin gene family. This type I hair keratin is an acidic protein which heterodimerizes with type II keratins to form hair and nails. The type I hair keratins are clustered in a region of chromosome 17q12-q21 and have the same direction of transcription. [provided by RefSeq]

Other Designations keratin, hair, acidic, 6|keratin, type I cuticular Ha6