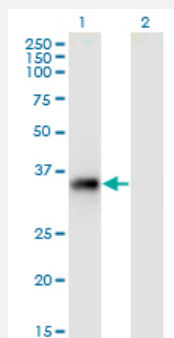


# STX11 monoclonal antibody (M01), clone 4F9

Catalog # H00008676-M01

Size 100 ug

## Applications

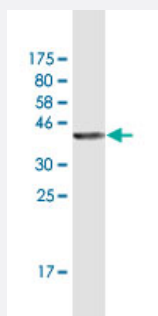


### Western Blot (Transfected lysate)

Western Blot analysis of STX11 expression in transfected 293T cell line by STX11 monoclonal antibody (M01), clone 4F9.

Lane 1: STX11 transfected lysate (Predicted MW: 33.2 KDa).

Lane 2: Non-transfected lysate.



Western Blot detection against Immunogen (36.52 KDa) .

## Specification

Product Description	Mouse monoclonal antibody raised against a partial recombinant STX11.
Immunogen	STX11 (NP_003755, 11 a.a. ~ 108 a.a) partial recombinant protein with GST tag. MW of the GST tag alone is 26 KDa.
Sequence	LSKQYDQQFPDGDDEFDSPHEDIVFETDHILESLYRDIRDIQDENQLLVADV KRLGKQNARFLTSM RRLSSI KRDTNSIAKAIKARGEVIHCKLRAMK
Host	Mouse
Reactivity	Human
Isotype	IgG2a Kappa

**Quality Control Testing**

Antibody Reactive Against Recombinant Protein.  
Western Blot detection against Immunogen (36.52 KDa) .

**Storage Buffer**

In 1x PBS, pH 7.4

**Storage Instruction**

Store at -20°C or lower. Aliquot to avoid repeated freezing and thawing.

## Applications

- Western Blot (Transfected lysate)

Western Blot analysis of STX11 expression in transfected 293T cell line by STX11 monoclonal antibody (M01), clone 4F9.

Lane 1: STX11 transfected lysate (Predicted MW: 33.2 KDa).

Lane 2: Non-transfected lysate.

[Protocol Download](#)

- Western Blot (Recombinant protein)

[Protocol Download](#)

- ELISA

## Gene Info — STX11

**Entrez GeneID**

[8676](#)

**GeneBank Accession#**

[NM\\_003764](#)

**Protein Accession#**

[NP\\_003755](#)

**Gene Name**

STX11

**Gene Alias**

FHL4, HLH4, HPLH4

**Gene Description**

syntaxin 11

**Omim ID**

[603552](#) [605014](#)

**Gene Ontology**

[Hyperlink](#)

**Gene Summary**

This gene encodes a member of the syntaxin family. Syntaxins have been implicated in the targeting and fusion of intracellular transport vesicles. This family member may regulate protein transport among late endosomes and the trans-Golgi network. Mutations in this gene have been associated with familial hemophagocytic lymphohistiocytosis. [provided by RefSeq]

Other Designations

OTTHUMP00000017349

## Pathway

- [SNARE interactions in vesicular transport](#)

## Disease

- [Lymphohistiocytosis](#)
- [Tobacco Use Disorder](#)