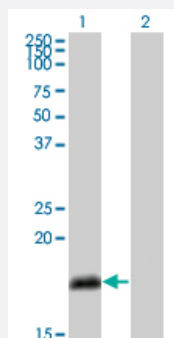


# NUMB monoclonal antibody (M01), clone 4A7-A6

Catalog # H00008650-M01

Size 100 ug

## Applications

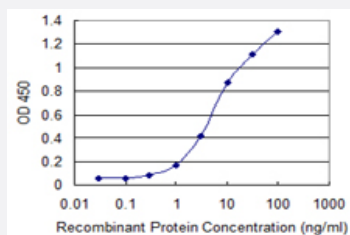


### Western Blot (Transfected lysate)

Western Blot analysis of NUMB expression in transfected 293T cell line by NUMB monoclonal antibody (M01), clone 4A7-A6.

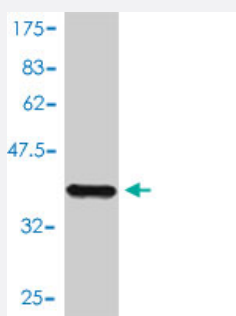
Lane 1: NUMB transfected lysate (14.5 KDa).

Lane 2: Non-transfected lysate.



### Sandwich ELISA (Recombinant protein)

Detection limit for recombinant GST tagged NUMB is 0.1 ng/ml as a capture antibody.



Western Blot detection against Immunogen (40.59 KDa) .

## Specification

### Product Description

Mouse monoclonal antibody raised against a full length recombinant NUMB.

<b>Immunogen</b>	NUMB (AAH33824, 1 a.a. ~ 135 a.a) full-length recombinant protein with GST tag. MW of the GST tag alone is 26 KDa.
<b>Sequence</b>	MPYPAPNVPVVGITPSQMVANVFGTAGHPQAAHPHQSPSLVRQQTFPHYEASSATTSPFFKPPA QHLNGSAAFNGVDDGRLASADRHTEVPTGTCPVDPFEAQWAALENKSKQRTNPSPTNPFSSDL QKTFEIEL
<b>Host</b>	Mouse
<b>Reactivity</b>	Human
<b>Interspecies Antigen Sequence</b>	Mouse (90); Rat (84)
<b>Isotype</b>	IgG1 kappa
<b>Quality Control Testing</b>	Antibody Reactive Against Recombinant Protein. Western Blot detection against Immunogen (40.59 KDa) .
<b>Storage Buffer</b>	In 1x PBS, pH 7.4
<b>Storage Instruction</b>	Store at -20°C or lower. Aliquot to avoid repeated freezing and thawing.

## Applications

- Western Blot (Transfected lysate)

Western Blot analysis of NUMB expression in transfected 293T cell line by NUMB monoclonal antibody (M01), clone 4A7-A6.

Lane 1: NUMB transfected lysate(14.5 KDa).

Lane 2: Non-transfected lysate.

[Protocol Download](#)

- Western Blot (Recombinant protein)

[Protocol Download](#)

- Sandwich ELISA (Recombinant protein)

Detection limit for recombinant GST tagged NUMB is 0.1 ng/ml as a capture antibody.

[Protocol Download](#)

- ELISA

## Gene Info — NUMB

Entrez GeneID	<a href="#">8650</a>
GeneBank Accession#	<a href="#">BC033824</a>
Protein Accession#	<a href="#">AAH33824</a>
Gene Name	NUMB
Gene Alias	S171
Gene Description	numb homolog (Drosophila)
Omim ID	<a href="#">603728</a>
Gene Ontology	<a href="#">Hyperlink</a>
Gene Summary	The protein encoded by this gene plays a role in the determination of cell fates during development. The encoded protein, whose degradation is induced in a proteasome-dependent manner by MDM2, is a membrane-bound protein that has been shown to associate with EPS15, LNX1, and NOTCH1. Four transcript variants encoding different isoforms have been found for this gene. [provided by RefSeq]
Other Designations	numb homolog

## Pathway

- [Notch signaling pathway](#)

## Disease

- [Atherosclerosis](#)
- [Calcinosis](#)
- [Disease Susceptibility](#)