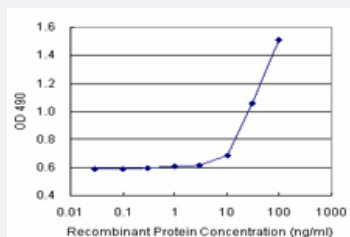


NUMB (Human) Matched Antibody Pair

Catalog # H00008650-AP21

Size 1 Set

Applications



Sandwich ELISA detection sensitivity ranging from 10 ng/ml to 100 ng/ml.

Specification

Product Description	This antibody pair set comes with a matched antibody pair to detect and quantify the protein level of human NUMB.
Reactivity	Human
Interspecies Antigen Sequence	Mouse (89); Rat (84)
Quality Control Testing	Standard curve using recombinant protein (H00008650-P01) as an analyte. Sandwich ELISA detection sensitivity ranging from 10 ng/ml to 100 ng/ml.
Supplied Product	Antibody pair set content: 1. Capture antibody: rabbit MaxPab® affinity purified polyclonal anti-NUMB (100 ug) 2. Detection antibody: mouse polyclonal anti-NUMB (40 ul) *Reagents are sufficient for at least 3-5 x 96 well plates using recommended protocols.
Storage Instruction	Store reagents of the antibody pair set at -20°C or lower. Please aliquot to avoid repeated freeze thaw cycle. Reagents should be returned to -20°C storage immediately after use.

Applications

- ELISA Pair (Recombinant protein)

[Protocol Download](#)

Gene Info — NUMB

Entrez GeneID [8650](#)

Gene Name NUMB

Gene Alias S171

Gene Description numb homolog (Drosophila)

Omim ID [603728](#)

Gene Ontology [Hyperlink](#)

Gene Summary The protein encoded by this gene plays a role in the determination of cell fates during development. The encoded protein, whose degradation is induced in a proteasome-dependent manner by MDM2, is a membrane-bound protein that has been shown to associate with EPS15, LNX1, and NOTCH1. Four transcript variants encoding different isoforms have been found for this gene. [provided by RefSeq]

Other Designations numb homolog

Pathway

- [Notch signaling pathway](#)

Disease

- [Atherosclerosis](#)
- [Calcinosis](#)
- [Disease Susceptibility](#)