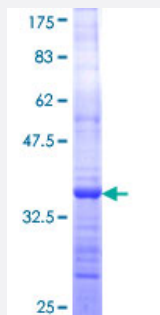


MAPKSP1 (Human) Recombinant Protein (Q01)

Catalog # H00008649-Q01

Size 25 ug, 10 ug

Applications



Specification

Product Description	Human MAPKSP1 partial ORF (NP_068805, 1 a.a. - 87 a.a.) recombinant protein with GST-tag at N-terminal.
Sequence	MADDLKRFLYKKLPSVEGLHAMVSDRDGVPVIKVANDNAPEHALRPGFLSTFALATDQGSKLGL SKNKSIIICYNTYQVVQFNRLP
Host	Wheat Germ (in vitro)
Theoretical MW (kDa)	35.31
Interspecies Antigen Sequence	Mouse (99); Rat (99)
Preparation Method	in vitro wheat germ expression system
Purification	Glutathione Sepharose 4 Fast Flow
Quality Control Testing	12.5% SDS-PAGE Stained with Coomassie Blue.
Storage Buffer	50 mM Tris-HCl, 10 mM reduced Glutathione, pH=8.0 in the elution buffer.
Storage Instruction	Store at -80°C. Aliquot to avoid repeated freezing and thawing.
Note	Best use within three months from the date of receipt of this protein.

Applications

- Enzyme-linked Immunoabsorbent Assay
- Western Blot (Recombinant protein)
- Antibody Production
- Protein Array

Gene Info — MAPKSP1

Entrez GeneID [8649](#)

GeneBank Accession# [NM_021970](#)

Protein Accession# [NP_068805](#)

Gene Name MAPKSP1

Gene Alias MAP2K1IP1, MAPBP, MP1

Gene Description MAPK scaffold protein 1

Omim ID [603296](#)

Gene Ontology [Hyperlink](#)

Gene Summary This gene encodes a scaffold protein that functions in the extracellular signal-regulated kinase (ERK) cascade. The protein is localized to late endosomes by the mitogen-activated protein-binding protein-interacting protein, and binds specifically to MAP kinase kinase MAP2K1/MEK1, MAP kinase MAPK3/ERK1, and MAP kinase MAPK1/ERK2. Studies of the orthologous gene in mouse indicate that it regulates late endosomal traffic and cell proliferation. Multiple transcript variants are expressed by this gene, but only one variant is thought to express a protein. [provided by RefSeq]

Other Designations MEK binding partner 1|MEK partner 1|mitogen-activated protein kinase kinase 1 interacting protein 1

Pathway

- [MAPK signaling pathway](#)