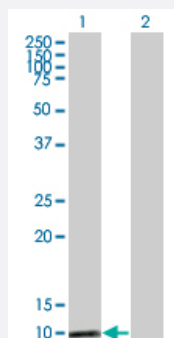


MAPKSP1 monoclonal antibody (M03), clone 2A4

Catalog # H00008649-M03

Size 100 ug

Applications

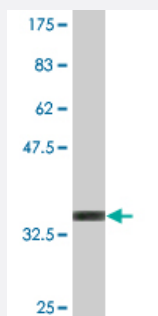


Western Blot (Transfected lysate)

Western Blot analysis of MAPKSP1 expression in transfected 293T cell line by MAPKSP1 monoclonal antibody (M03), clone 2A4.

Lane 1: MAPKSP1 transfected lysate (13.623 KDa).

Lane 2: Non-transfected lysate.



Western Blot detection against Immunogen (35.31 KDa) .

Specification

Product Description

Mouse monoclonal antibody raised against a partial recombinant MAPKSP1.

Immunogen

MAPKSP1 (NP_068805, 1 a.a. ~ 87 a.a) partial recombinant protein with GST tag. MW of the GST tag alone is 26 KDa.

Sequence

MADDLKRFYKKLP SVEGLHAMVSDRDGVPVIKVANDNAPEHALRPGFLSTFALATDQGSKLGL
SKNKSIIICYNTYQVVQFNRLP

Host

Mouse

Reactivity

Human

| | |
|-------------------------------|--|
| Interspecies Antigen Sequence | Mouse (99); Rat (99) |
| Isotype | IgG1 Kappa |
| Quality Control Testing | Antibody Reactive Against Recombinant Protein. Western Blot detection against Immunogen (35.31 KDa) . |
| Storage Buffer | In 1x PBS, pH 7.4 |
| Storage Instruction | Store at -20°C or lower. Aliquot to avoid repeated freezing and thawing. |

Applications

- Western Blot (Transfected lysate)

Western Blot analysis of MAPKSP1 expression in transfected 293T cell line by MAPKSP1 monoclonal antibody (M03), clone 2A4.

Lane 1: MAPKSP1 transfected lysate(13.623 KDa).

Lane 2: Non-transfected lysate.

[Protocol Download](#)

- Western Blot (Recombinant protein)

[Protocol Download](#)

- ELISA

Gene Info — MAPKSP1

| | |
|---------------------|---------------------------|
| Entrez GeneID | 8649 |
| GeneBank Accession# | NM_021970 |
| Protein Accession# | NP_068805 |
| Gene Name | MAPKSP1 |
| Gene Alias | MAP2K1IP1, MAPBP, MP1 |
| Gene Description | MAPK scaffold protein 1 |
| Omim ID | 603296 |

Gene Ontology

[Hyperlink](#)

Gene Summary

This gene encodes a scaffold protein that functions in the extracellular signal-regulated kinase (ERK) cascade. The protein is localized to late endosomes by the mitogen-activated protein-binding protein-interacting protein, and binds specifically to MAP kinase kinase MAP2K1/MEK1, MAP kinase MAPK3/ERK1, and MAP kinase MAPK1/ERK2. Studies of the orthologous gene in mouse indicate that it regulates late endosomal traffic and cell proliferation. Multiple transcript variants are expressed by this gene, but only one variant is thought to express a protein. [provided by RefSeq]

Other Designations

MEK binding partner 1|MEK partner 1|mitogen-activated protein kinase kinase 1 interacting protein 1

Pathway

- [MAPK signaling pathway](#)