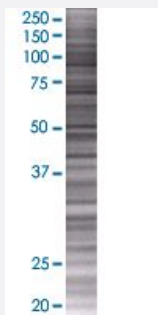


RNASET2 293T Cell Transient Overexpression Lysate(Denatured)

Catalog # H00008635-T01

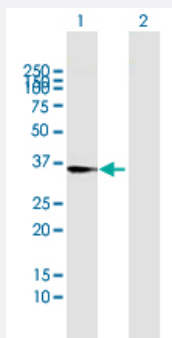
Size 100 uL

Applications



SDS-PAGE Gel

RNASET2 transfected lysate.



Western Blot

Lane 1: RNASET2 transfected lysate (29.5 KDa)

Lane 2: Non-transfected lysate.

Specification

Transfected Cell Line	293T
Plasmid	pCMV-RNASET2 full-length
Host	Human
Theoretical MW (kDa)	29.5
Interspecies Antigen Sequence	Mouse (67); Rat (68)

Quality Control Testing

Transient overexpression cell lysate was tested with Anti-RNASET2 antibody ([H00008635-B01](#)) by Western Blots.
SDS-PAGE Gel
RNASET2 transfected lysate.
Western Blot
Lane 1: RNASET2 transfected lysate (29.5 KDa)
Lane 2: Non-transfected lysate.

Storage Buffer

1X Sample Buffer (50 mM Tris-HCl, 2% SDS, 10% glycerol, 300 mM 2-mercaptoethanol, 0.01% Bromophenol blue)

Storage Instruction

Store at -80°C. Aliquot to avoid repeated freezing and thawing.

Applications

- Western Blot

Gene Info — RNASET2

Entrez GeneID[8635](#)**GeneBank Accession#**[NM_003730](#)**Protein Accession#**[NP_003721](#)**Gene Name**

RNASET2

Gene Alias

RNASE6PL, bA514O12.3

Gene Description

ribonuclease T2

Gene Ontology[Hyperlink](#)**Gene Summary**

This ribonuclease gene is a novel member of the Rh/T2/S-glycoprotein class of extracellular ribonucleases. It is a single copy gene that maps to 6q27, a region associated with human malignancies and chromosomal rearrangement. [provided by RefSeq]

Other Designations

OTTHUMP00000017608|ribonuclease 6

Disease

- [Crohn Disease](#)
- [Genetic Predisposition to Disease](#)

- [Vitiligo](#)