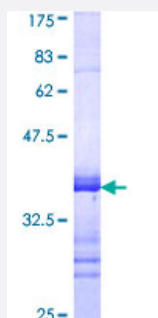


UNC5C (Human) Recombinant Protein (Q01)

Catalog # H00008633-Q01

Size 25 ug, 10 ug

Applications



Specification

Product Description	Human UNC5C partial ORF (AAH41156, 498 a.a. - 597 a.a.) recombinant protein with GST-tag at N-terminal.
Sequence	IKVYNTSGAVTPQDDLSEFTSKLSPQMTQSLLENEALSLKNQSLARQTDPSCATFGSFNSLGGHLI VPNSGVSLIPAGAIPQGRVYEMYVTVHRKETMR
Host	Wheat Germ (in vitro)
Theoretical MW (kDa)	36.41
Interspecies Antigen Sequence	Mouse (93); Rat (93)
Preparation Method	in vitro wheat germ expression system
Purification	Glutathione Sepharose 4 Fast Flow
Quality Control Testing	12.5% SDS-PAGE Stained with Coomassie Blue.
Storage Buffer	50 mM Tris-HCl, 10 mM reduced Glutathione, pH=8.0 in the elution buffer.
Storage Instruction	Store at -80°C. Aliquot to avoid repeated freezing and thawing.
Note	Best use within three months from the date of receipt of this protein.

Applications

- Enzyme-linked Immunoabsorbent Assay
- Western Blot (Recombinant protein)
- Antibody Production
- Protein Array

Gene Info — UNC5C

Entrez GeneID [8633](#)

GeneBank Accession# [BC041156](#)

Protein Accession# [AAH41156](#)

Gene Name UNC5C

Gene Alias UNC5H3

Gene Description unc-5 homolog C (C. elegans)

Omim ID [603610](#)

Gene Ontology [Hyperlink](#)

Gene Summary This gene product belongs to the UNC-5 family of netrin receptors. Netrins are secreted proteins that direct axon extension and cell migration during neural development. They are bifunctional proteins that act as attractants for some cell types and as repellents for others, and these opposite actions are thought to be mediated by two classes of receptors. The UNC-5 family of receptors mediate the repellent response to netrin; they are transmembrane proteins containing 2 immunoglobulin (Ig)-like domains and 2 type I thrombospondin motifs in the extracellular region. [provided by RefSeq]

Other Designations homolog of C. elegans transmembrane receptor Unc5junc5 (C.elegans homolog) c|unc5C

Pathway

- [Axon guidance](#)

Disease

- [Genetic Predisposition to Disease](#)
- [Parkinson disease](#)
- [Psychiatric Status Rating Scales](#)
- [Schizophrenia](#)
- [Tobacco Use Disorder](#)