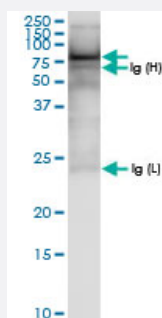


ASMTL (Human) IP-WB Antibody Pair

Catalog # H00008623-PW1

Size 1 Set

Applications



Immunoprecipitation of ASMTL transfected lysate using rabbit polyclonal anti-ASMTL and Protein A Magnetic Bead ([U0007](#)), and immunoblotted with rabbit polyclonal anti-ASMTL.

Specification

Product Description	This IP-WB antibody pair set comes with one antibody for immunoprecipitation and another to detect the precipitated protein in western blot.
Reactivity	Human
Interspecies Antigen Sequence	Rat (49)
Quality Control Testing	Immunoprecipitation-Western Blot (IP-WB) Immunoprecipitation of ASMTL transfected lysate using rabbit polyclonal anti-ASMTL and Protein A Magnetic Bead (U0007), and immunoblotted with rabbit polyclonal anti-ASMTL.
Supplied Product	Antibody pair set content: 1. Antibody pair for IP: rabbit polyclonal anti-ASMTL (300 ul) 2. Antibody pair for WB: rabbit polyclonal anti-ASMTL (50 ul)
Storage Instruction	Store reagents of the antibody pair set at -20°C or lower. Please aliquot to avoid repeated freeze thaw cycle. Reagents should be returned to -20°C storage immediately after use.

Applications

- Immunoprecipitation-Western Blot

[Protocol Download](#)

Gene Info — ASMTL

Entrez GeneID	8623
Gene Name	ASMTL
Gene Alias	ASMTLX, ASMTLY, ASTM L
Gene Description	acetylserotonin O-methyltransferase-like
Omim ID	300162 400011
Gene Ontology	Hyperlink
Other Designations	OTTHUMP00000022825 acetylserotonin N-methyltransferase-like