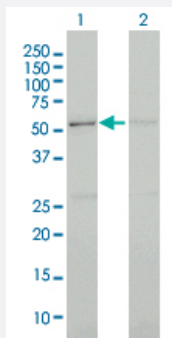


# CDC2L5 monoclonal antibody (M02), clone 3G1

Catalog # H00008621-M02

Size 100 ug

## Applications

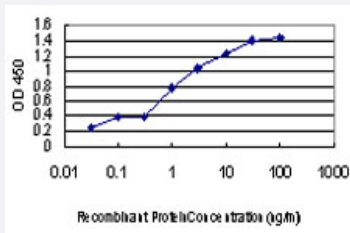


### Western Blot (Transfected lysate)

Western Blot analysis of CDC2L5 expression in transfected 293T cell line by CDC2L5 monoclonal antibody (M02), clone 3G1.

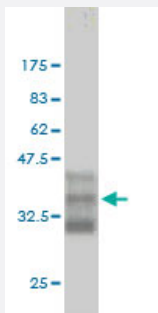
Lane 1: CDC2L5 transfected lysate (37 kDa).

Lane 2: Non-transfected lysate.



### Sandwich ELISA (Recombinant protein)

Detection limit for recombinant GST tagged CDC2L5 is approximately 0.03 ng/ml as a capture antibody.



Western Blot detection against Immunogen (35.53 kDa).

## Specification

### Product Description

Mouse monoclonal antibody raised against a partial recombinant CDC2L5.

<b>Immunogen</b>	CDC2L5 (AAH01274, 1 a.a. ~ 90 a.a) partial recombinant protein with GST tag. MW of the GST tag alone is 26 KDa.
<b>Sequence</b>	MLPEDKEADSLRGNISVKAVKKEVEKKLRCLLADLPLPELPGGDDLKSPEEKKTATQLHSKR RPKICGPRYGETKEKDIDWGKRCVDK
<b>Host</b>	Mouse
<b>Reactivity</b>	Human
<b>Interspecies Antigen Sequence</b>	Mouse (97); Rat (98)
<b>Isotype</b>	IgG2a kappa
<b>Quality Control Testing</b>	Antibody Reactive Against Recombinant Protein. Western Blot detection against Immunogen (35.53 KDa) .
<b>Storage Buffer</b>	In 1x PBS, pH 7.4
<b>Storage Instruction</b>	Store at -20°C or lower. Aliquot to avoid repeated freezing and thawing.

## Applications

- Western Blot (Transfected lysate)

Western Blot analysis of CDC2L5 expression in transfected 293T cell line by CDC2L5 monoclonal antibody (M02), clone 3G1.

Lane 1: CDC2L5 transfected lysate(37 KDa).

Lane 2: Non-transfected lysate.

[Protocol Download](#)

- Western Blot (Recombinant protein)

[Protocol Download](#)

- Sandwich ELISA (Recombinant protein)

Detection limit for recombinant GST tagged CDC2L5 is approximately 0.03ng/ml as a capture antibody.

[Protocol Download](#)

- ELISA

## Gene Info — CDC2L5

Entrez GeneID	<a href="#">8621</a>
GeneBank Accession#	<a href="#">BC001274</a>
Protein Accession#	<a href="#">AAH01274</a>
Gene Name	CDC2L5
Gene Alias	CDC2L, CHED, FLJ35215, KIAA1791
Gene Description	cell division cycle 2-like 5 (cholinesterase-related cell division controller)
Omim ID	<a href="#">603309</a>
Gene Ontology	<a href="#">Hyperlink</a>
Gene Summary	<p>The protein encoded by this gene is a member of the cyclin-dependent serine/threonine protein kinase family. Members of this family are well known for their essential roles as master switches in cell cycle control. Some of the cell cycle control kinases are able to phosphorylate proteins that are important for cell differentiation and apoptosis, thus provide connections between cell proliferation, differentiation, and apoptosis. Proteins of this family may also be involved in non-cell cycle-related functions, such as neurocytoskeleton dynamics. The exact function of this protein has not yet been determined. It has unusually large N- and C-termini and is ubiquitously expressed in many tissues. Two alternatively spliced variants are described. [provided by RefSeq]</p>
Other Designations	CDC2-related protein kinase 5 cell division cycle 2-like 5 cell division cycle 2-like 5, isoform 1; cholinesterase-related cell division controller; CDC2-related protein kinase 5