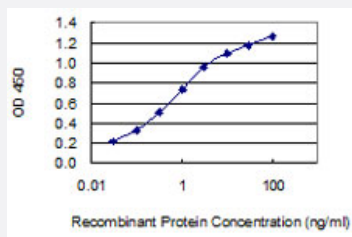


NPFF monoclonal antibody (M01), clone 7F12

Catalog # H00008620-M01

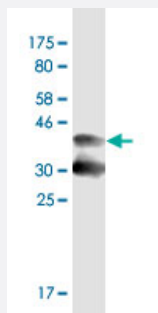
Size 100 ug

Applications



Sandwich ELISA (Recombinant protein)

Detection limit for recombinant GST tagged NPFF is 0.03 ng/ml as a capture antibody.



Western Blot detection against Immunogen (39.4 KDa) .

Specification

Product Description	Mouse monoclonal antibody raised against a full-length recombinant NPFF.
Immunogen	NPFF (AAI04235.1, 1 a.a. ~ 116 a.a) full-length recombinant protein with GST tag. MW of the GST tag alone is 26 KDa.
Sequence	MVPQPPTTCPWKVPSPCDLRVQGICPSSFPDTPLAQEEDSEPLPPQDAQTSGSLLHYLLQAM ERPGRSQAFLFQPQRFGNTQGSWRNEWLSPRAGEGLNSQFWSLAAPQRFGKK
Host	Mouse
Reactivity	Human

Interspecies Antigen Sequence	Mouse (62); Rat (59)
Isotype	IgG2a Kappa
Quality Control Testing	Antibody Reactive Against Recombinant Protein. Western Blot detection against Immunogen (39.4 KDa) .
Storage Buffer	In 1x PBS, pH 7.4
Storage Instruction	Store at -20°C or lower. Aliquot to avoid repeated freezing and thawing.

Applications

- Western Blot (Recombinant protein)

[Protocol Download](#)

- Sandwich ELISA (Recombinant protein)

Detection limit for recombinant GST tagged NPFF is 0.03 ng/ml as a capture antibody.

[Protocol Download](#)

- ELISA

Gene Info — NPFF

Entrez GeneID	8620
GeneBank Accession#	BC104234.1
Protein Accession#	AAI04235.1
Gene Name	NPFF
Gene Alias	FMRFAL
Gene Description	neuropeptide FF-amide peptide precursor
Omim ID	604643
Gene Ontology	Hyperlink

Gene Summary

FMFRamide-related protein precursor plays a role in the regulation of heart rate and blood pressure and the modulation of morphine-induced antinociception. FMRFAL encodes a preproprotein which is cleaved to form two active peptides with similar function. [provided by RefSeq]

Other Designations

FMFRamide-related peptide|neuropeptide FF-amide peptide

Pathway

- [Neuroactive ligand-receptor interaction](#)