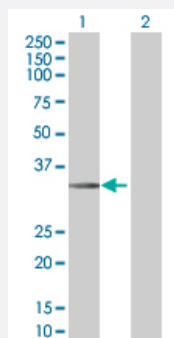


STC2 293T Cell Transient Overexpression Lysate(Denatured)

Catalog # H00008614-T01

Size 100 uL

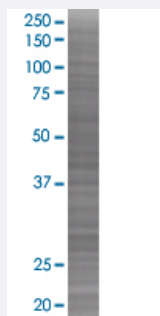
Applications



Western Blot

Lane 1: STC2 transfected lysate (33.2 KDa)

Lane 2: Non-transfected lysate.



SDS-PAGE Gel

STC2 transfected lysate.

Specification

Transfected Cell Line	293T
Plasmid	pCMV-STC2 full-length
Host	Human
Theoretical MW (kDa)	33.33
Interspecies Antigen Sequence	Mouse (86); Rat (84)

Quality Control Testing

Transient overexpression cell lysate was tested with Anti-STC2 antibody ([H00008614-B01](#)) by Western Blots.

Western Blot

Lane 1: STC2 transfected lysate (33.2 KDa)

Lane 2: Non-transfected lysate.

SDS-PAGE Gel

STC2 transfected lysate.

Storage Buffer

1X Sample Buffer (50 mM Tris-HCl, 2% SDS, 10% glycerol, 300 mM 2-mercaptoethanol, 0.01% Bromophenol blue)

Storage Instruction

Store at -80°C. Aliquot to avoid repeated freezing and thawing.

Applications

- Western Blot

Gene Info — STC2

Entrez GeneID

[8614](#)

GeneBank Accession#

[NM_003714](#)

Protein Accession#

[NP_003705](#)

Gene Name

STC2

Gene Alias

STC-2, STCRP

Gene Description

stanniocalcin 2

Omim ID

[603665](#)

Gene Ontology

[Hyperlink](#)

Gene Summary

This gene encodes a secreted, homodimeric glycoprotein that is expressed in a wide variety of tissues and may have autocrine or paracrine functions. The encoded protein has 10 of its 15 cysteine residues conserved among stanniocalcin family members and is phosphorylated by casein kinase 2 exclusively on its serine residues. Its C-terminus contains a cluster of histidine residues which may interact with metal ions. The protein may play a role in the regulation of renal and intestinal calcium and phosphate transport, cell metabolism, or cellular calcium/phosphate homeostasis. Constitutive overexpression of human stanniocalcin 2 in mice resulted in pre- and postnatal growth restriction, reduced bone and skeletal muscle growth, and organomegaly. Expression of this gene is induced by estrogen and altered in some breast cancers. [provided by RefSeq]

Other Designations

STC-related protein|stanniocalcin-related protein

Disease

- [Amyotrophic lateral sclerosis](#)
- [Anoxia](#)
- [Genetic Predisposition to Disease](#)
- [Hyperparathyroidism](#)