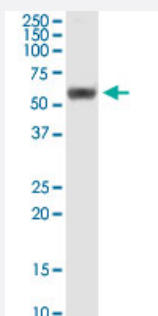


# RUVBL1 monoclonal antibody (M01), clone 3G4-1F8

Catalog # H00008607-M01

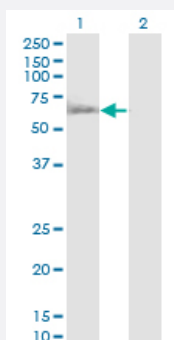
Size 100 ug

## Applications



### Western Blot (Tissue lysate)

RUVBL1 monoclonal antibody (M01), clone 3G4-1F8. Western Blot analysis of RUVBL1 expression in human pancreas.

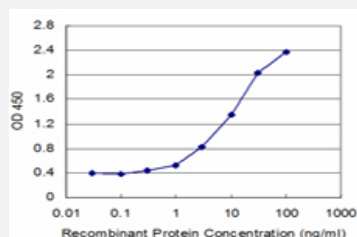


### Western Blot (Transfected lysate)

Western Blot analysis of RUVBL1 expression in transfected 293T cell line by RUVBL1 monoclonal antibody (M01), clone 3G4-1F8.

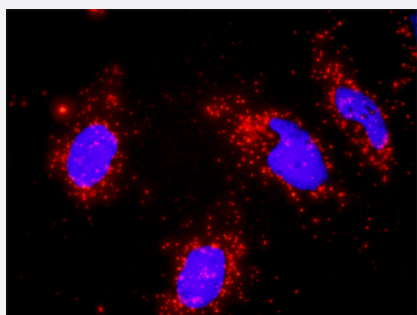
Lane 1: RUVBL1 transfected lysate (Predicted MW: 50.2 KDa).

Lane 2: Non-transfected lysate.



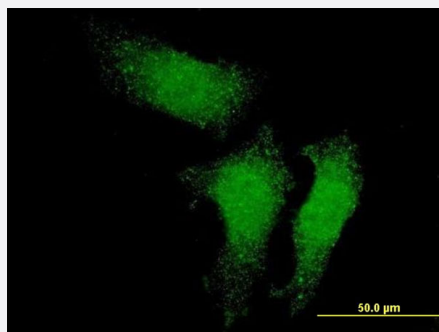
### Sandwich ELISA (Recombinant protein)

Detection limit for recombinant GST tagged RUVBL1 is approximately 0.3ng/ml as a capture antibody.



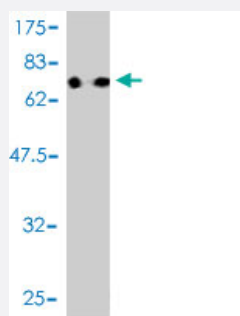
### In situ Proximity Ligation Assay (Cell)

Proximity Ligation Analysis of protein-protein interactions between MAP3K7 and RUVBL1. HeLa cells were stained with anti-MAP3K7 rabbit purified polyclonal 1:1200 and anti-RUVBL1 mouse monoclonal antibody 1:50. Each red dot represents the detection of protein-protein interaction complex, and nuclei were counterstained with DAPI (blue).



## Immunofluorescence

Immunofluorescence of monoclonal antibody to RUVBL1 on HeLa cell .  
[antibody concentration 10 ug/ml]



Western Blot detection against Immunogen (75.9 KDa) .

## Specification

|                                      |  |
|--------------------------------------|--|
| <b>Product Description</b>           | Mouse monoclonal antibody raised against a full length recombinant RUVBL1.   |
| <b>Immunogen</b>                     | RUVBL1 (AAH02993, 1 a.a. ~ 456 a.a) full-length recombinant protein with GST tag. MW of the GST tag alone is 26 KDa.   |
| <b>Sequence</b>                      | MKIEEVKSTTKTQRIASHSHVKGLGLDESGLAKQAASGLVGQENAREACGVIVELIKSKKMAGRA<br>VLLAGPPGTGKTALALAIQELGSKVPFCPMVGSEVYSTEIKKTEVLMENFRRAGLRIKETKEVYE<br>GEVTELTPECETENPMGGYGKTISHVIIGLKTAKGTKQLKLDPSIFESLQKERVEAGDVI MEANS GAV<br>KRQGRCDTYATEFDLEAEYVPLPKGDVHKKKEIIQDVTLDHLDVANARPQGGQDILSMMGQLMK<br>PKKTEITDKLRGEINKVVNKYIDQGIAELVPGVLFVDEVHMLDIECFYTLHRALESSIAPMIFASNRG<br>NCVIRGTEDITSPHGIPLDLLDRVMIIRTMLYTPQEMKQIIKIRAQTEGINISEEALNHLGEIGTKTTLRYS<br>VQLLTPANLLAKINGKDSIEKEHVEEISELFYDAKSSAKILADQQDKYMK |
| <b>Host</b>                          | Mouse  |
| <b>Reactivity</b>                    | Human  |
| <b>Interspecies Antigen Sequence</b> | Mouse (99); Rat (99)   |
| <b>Isotype</b>                       | IgG2a kappa  |
| <b>Quality Control Testing</b>       | Antibody Reactive Against Recombinant Protein.<br>Western Blot detection against Immunogen (75.9 KDa) .  |
| <b>Storage Buffer</b>                | In 1x PBS, pH 7.4  |

**Storage Instruction**

Store at -20°C or lower. Aliquot to avoid repeated freezing and thawing.

## Applications

- Western Blot (Tissue lysate)

RUVBL1 monoclonal antibody (M01), clone 3G4-1F8. Western Blot analysis of RUVBL1 expression in human pancreas.

[Protocol Download](#)

- Western Blot (Transfected lysate)

Western Blot analysis of RUVBL1 expression in transfected 293T cell line by RUVBL1 monoclonal antibody (M01), clone 3G4-1F8.

Lane 1: RUVBL1 transfected lysate (Predicted MW: 50.2 KDa).

Lane 2: Non-transfected lysate.

[Protocol Download](#)

- Western Blot (Recombinant protein)

[Protocol Download](#)

- Sandwich ELISA (Recombinant protein)

Detection limit for recombinant GST tagged RUVBL1 is approximately 0.3ng/ml as a capture antibody.

[Protocol Download](#)

- ELISA

- *In situ* Proximity Ligation Assay (Cell)

Proximity Ligation Analysis of protein-protein interactions between MAP3K7 and RUVBL1. HeLa cells were stained with anti-MAP3K7 rabbit purified polyclonal 1:1200 and anti-RUVBL1 mouse monoclonal antibody 1:50. Each red dot represents the detection of protein-protein interaction complex, and nuclei were counterstained with DAPI (blue).

- Immunofluorescence

Immunofluorescence of monoclonal antibody to RUVBL1 on HeLa cell . [antibody concentration 10 ug/ml]

## Gene Info — RUVBL1

Entrez GeneID

[8607](#)

|                     |  |
|---------------------|--|
| GeneBank Accession# | <a href="#">BC002993</a>   |
| Protein Accession#  | <a href="#">AAH02993</a>   |
| Gene Name           | RUVBL1   |
| Gene Alias          | ECP54, INO80H, NMP238, PONTIN, Pontin52, RVB1, TIH1, TIP49, TIP49A   |
| Gene Description    | RuvB-like 1 (E. coli)  |
| Omim ID             | <a href="#">603449</a>   |
| Gene Ontology       | <a href="#">Hyperlink</a>  |
| Other Designations  | INO80 complex subunit H RuvB (E coli homolog)-like 1 RuvB-like 1 TATA binding protein interacting protein 49 kDa |

## Publication Reference

- [The Relationship between RUVBL1 \(Pontin, TIP49, NMP238\) and BCL6 in Benign and Malignant Human Lymphoid Tissues.](#)  
 Baron BW, Baron RM, Baron JM.  
 Biochemistry and Biophysics Reports 2016 Jul; 6:1.  
 Application: WB, Human, HEK 293T cells
- [Autoantibodies to RuvBL1 and RuvBL2: A novel systemic sclerosis-related antibody associated with diffuse cutaneous and skeletal muscle involvement.](#)  
 Kaji K, Fertig N, Medsger TA Jr, Satoh T, Hoshino K, Hamaguchi Y, Hasegawa M, Lucas M, Schnure A, Ogawa F, Sato S, Takehara K, Fujimoto M, Kuwana M.  
 Arthritis Care & Research 2014 Apr; 66(4):575.  
 Application: IF, WB-Ce, Human, HEp-2, K562 cells, Serum

## Pathway

- [Wnt signaling pathway](#)

## Disease

- [Ovarian cancer](#)
- [Ovarian Neoplasms](#)

- [Retinoblastoma](#)