

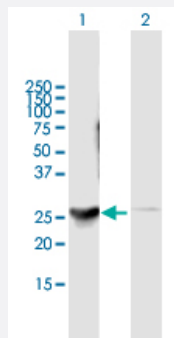
MaxPab®

DENR purified MaxPab mouse polyclonal antibody (B01P)

Catalog # H00008562-B01P

Size 50 ug

Applications



Western Blot (Transfected lysate)

Western Blot analysis of DENR expression in transfected 293T cell line ([H00008562-T01](#)) by DENR MaxPab polyclonal antibody.

Lane 1: DENR transfected lysate(21.78 kDa).

Lane 2: Non-transfected lysate.

Specification

Product Description	Mouse polyclonal antibody raised against a full-length human DENR protein.
Immunogen	DENR (NP_003668.2, 1 a.a. ~ 198 a.a) full-length human protein.
Sequence	MAADISESSGADCKGDPNRSKLDADYPLRVLYCGVCSLPTEYCEYMPDVAKCRQWLEKNFPN EFAKLTVENSPKQEAGISEGQGTAGEEEEEKKKQKRGGRGQIKQKKKTVPQKVTIAKIPRAKKKYVT RVCGLATFEIDLKEAQRFFAQKFSCGASVTGEDEIIQGDFTDDIIDVIQEKWPEVDDDSIEDLGEVK K
Host	Mouse
Reactivity	Human
Interspecies Antigen Sequence	Mouse (96); Rat (95)
Quality Control Testing	Antibody reactive against mammalian transfected lysate.
Storage Buffer	In 1x PBS, pH 7.4
Storage Instruction	Store at -20°C or lower. Aliquot to avoid repeated freezing and thawing.

Applications

- Western Blot (Transfected lysate)

Western Blot analysis of DENR expression in transfected 293T cell line ([H00008562-T01](#)) by DENR MaxPab polyclonal antibody.

Lane 1: DENR transfected lysate(21.78 KDa).

Lane 2: Non-transfected lysate.

[Protocol Download](#)

Gene Info — DENR

Entrez GeneID	8562
---------------	----------------------

GeneBank Accession#	NM_003677.3
---------------------	-----------------------------

Protein Accession#	NP_003668.2
--------------------	-----------------------------

Gene Name	DENR
-----------	------

Gene Alias	DRP, DRP1, SMAP-3
------------	-------------------

Gene Description	density-regulated protein
------------------	---------------------------

Omim ID	604550
---------	------------------------

Gene Ontology	Hyperlink
---------------	---------------------------

Gene Summary	This gene encodes a protein whose expression was found to increase in cultured cells at high density but not during growth arrest. This gene was also shown to have increased expression in cells overexpressing HER-2/neu proto-oncogene. The protein contains an SUI1 domain. In budding yeast, SUI1 is a translation initiation factor that along with eIF-2 and the initiator tRNA-Met, directs the ribosome to the proper translation start site. Proteins similar to SUI have been found in mammals, insects, and plants. [provided by RefSeq]
--------------	--

Other Designations	smooth muscle cell associated protein-3
--------------------	---