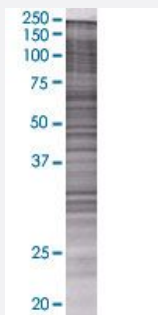


CDK10 293T Cell Transient Overexpression Lysate(Denatured)

Catalog # H00008558-T01

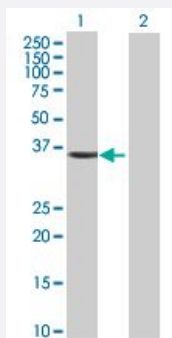
Size 100 uL

Applications



SDS-PAGE Gel

CDK10 transfected lysate.



Western Blot

Lane 1: CDK10 transfected lysate (36.52 KDa)

Lane 2: Non-transfected lysate.

Specification

Transfected Cell Line	293T
Plasmid	pCMV-CDK10 full-length
Host	Human
Theoretical MW (kDa)	36.52
Interspecies Antigen Sequence	Mouse (97); Rat (97)

Quality Control Testing

Transient overexpression cell lysate was tested with Anti-CDK10 antibody ([H00008558-B01](#)) by Western Blots.
SDS-PAGE Gel
CDK10 transfected lysate.
Western Blot
Lane 1: CDK10 transfected lysate (36.52 KDa)
Lane 2: Non-transfected lysate.

Storage Buffer

1X Sample Buffer (50 mM Tris-HCl, 2% SDS, 10% glycerol, 300 mM 2-mercaptoethanol, 0.01% Bromophenol blue)

Storage Instruction

Store at -80°C. Aliquot to avoid repeated freezing and thawing.

Applications

- Western Blot

Gene Info — CDK10

Entrez GeneID

[8558](#)

GeneBank Accession#

[NM_003674.2](#)

Protein Accession#

[NP_003665.2](#)

Gene Name

CDK10

Gene Alias

PISSLRE

Gene Description

cyclin-dependent kinase 10

Omim ID

[603464](#)

Gene Ontology

[Hyperlink](#)

Gene Summary

The protein encoded by this gene belongs to the CDK subfamily of the Ser/Thr protein kinase family. The CDK subfamily members are highly similar to the gene products of *S. cerevisiae* cdc28, and *S. pombe* cdc2, and are known to be essential for cell cycle progression. This kinase has been shown to play a role in cellular proliferation and its function is limited to cell cycle G2-M phase. Multiple transcript variants encoding different isoforms have been found for this gene. [provided by RefSeq]

Other Designations

CDC2-related protein kinase|cell division protein kinase 10|cyclin-dependent kinase (CDC2-like) 10|cyclin-dependent kinase related protein|serine/threonine protein kinase PISSLRE