

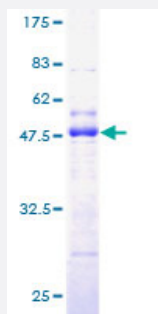
Full-Length

TCAP (Human) Recombinant Protein (P02)

Catalog # H00008557-P02

Size 25 ug, 10 ug

Applications



Specification

Product Description	Human TCAP full-length ORF (AAH12628, 1 a.a. - 167 a.a.) recombinant protein with GST-tag at N-terminal.
Sequence	MATSELSCEVSEENCERREAFWAEWKDLTLSTRPEEGCSLHEEDTQRHETYHQQGQCQVLVQ RSPWLMMRMGILGRGLQEYQLPYQVRVLPPIFTPAKMGATKEEREDTPIQLQELLALETALGGQC VDRQEVAEITKQLPPVVPVSKPGALRRSLSRMSQEAQRG
Host	Wheat Germ (in vitro)
Theoretical MW (kDa)	44.11
Interspecies Antigen Sequence	Mouse (90)
Preparation Method	in vitro wheat germ expression system
Purification	Glutathione Sepharose 4 Fast Flow
Quality Control Testing	12.5% SDS-PAGE Stained with Coomassie Blue.
Storage Buffer	50 mM Tris-HCl, 10 mM reduced Glutathione, pH=8.0 in the elution buffer.
Storage Instruction	Store at -80°C. Aliquot to avoid repeated freezing and thawing.

Note

Best use within three months from the date of receipt of this protein.

Applications

- Enzyme-linked Immunoabsorbent Assay
- Western Blot (Recombinant protein)
- Antibody Production
- Protein Array

Gene Info — TCAP

Entrez GeneID [8557](#)

GeneBank Accession# [BC012628](#)

Protein Accession# [AAH12628](#)

Gene Name TCAP

Gene Alias CMD1N, LGMD2G, T-cap, TELE, telethonin

Gene Description titin-cap (telethonin)

Omim ID [601954](#) [604488](#) [607487](#)

Gene Ontology [Hyperlink](#)

Gene Summary Sarcomere assembly is regulated by the muscle protein titin. Titin is a giant elastic protein with kinase activity that extends half the length of a sarcomere. It serves as a scaffold to which myofibrils and other muscle related proteins are attached. This gene encodes a protein found in striated and cardiac muscle that binds to the titin Z1-Z2 domains and is a substrate of titin kinase, interactions thought to be critical to sarcomere assembly. Mutations in this gene are associated with limb-girdle muscular dystrophy type 2G. [provided by RefSeq]

Other Designations 19 kDa sarcomeric protein|limb girdle muscular dystrophy 2G (autosomal recessive)|telethonin

Disease

- [Breast cancer](#)

- [Breast Neoplasms](#)
- [Cardiomyopathy](#)
- [Genetic Predisposition to Disease](#)
- [Hypercholesterolemia](#)