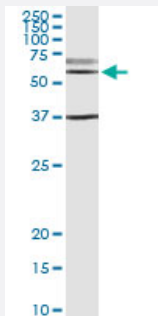


CDC14B (Human) IP-WB Antibody Pair

Catalog # H00008555-PW1

Size 1 Set

Applications



Immunoprecipitation of CDC14B transfected lysate using rabbit polyclonal anti-CDC14B and Protein A Magnetic Bead ([U0007](#)), and immunoblotted with mouse purified polyclonal anti-CDC14B.

Specification

Product Description	This IP-WB antibody pair set comes with one antibody for immunoprecipitation and another to detect the precipitated protein in western blot.
Reactivity	Human
Interspecies Antigen Sequence	Mouse (87); Rat (88)
Quality Control Testing	Immunoprecipitation-Western Blot (IP-WB) Immunoprecipitation of CDC14B transfected lysate using rabbit polyclonal anti-CDC14B and Protein A Magnetic Bead (U0007), and immunoblotted with mouse purified polyclonal anti-CDC14B.
Supplied Product	Antibody pair set content: 1. Antibody pair for IP: rabbit polyclonal anti-CDC14B (300 ul) 2. Antibody pair for WB: mouse purified polyclonal anti-CDC14B (50 ug)
Storage Instruction	Store reagents of the antibody pair set at -20°C or lower. Please aliquot to avoid repeated freeze thaw cycle. Reagents should be returned to -20°C storage immediately after use.

Applications

- Immunoprecipitation-Western Blot

[Protocol Download](#)

Gene Info — CDC14B

Entrez GeneID [8555](#)

Gene Name CDC14B

Gene Alias CDC14B3, Cdc14B1, Cdc14B2, hCDC14B

Gene Description CDC14 cell division cycle 14 homolog B (S. cerevisiae)

Omim ID [603505](#)

Gene Ontology [Hyperlink](#)

Gene Summary The protein encoded by this gene is a member of the dual specificity protein tyrosine phosphatase family. This protein is highly similar to Saccharomyces cerevisiae Cdc14, a protein tyrosine phosphatase involved in the exit of cell mitosis and initiation of DNA replication, which suggests the role in cell cycle control. This protein has been shown to interact with and dephosphorylates tumor suppressor protein p53, and is thought to regulate the function of p53. Alternative splice of this gene results in 3 transcript variants encoding distinct isoforms. [provided by RefSeq]

Other Designations CDC14 homolog B|OTTHUMP00000021729|OTTHUMP00000021730|OTTHUMP00000063774

Pathway

- [Cell cycle](#)