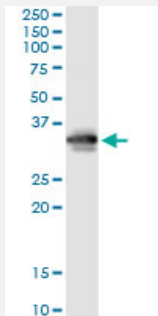


# FCN3 (Human) IP-WB Antibody Pair

Catalog # H00008547-PW1

Size 1 Set

## Applications



Immunoprecipitation of FCN3 transfected lysate using mouse monoclonal anti-FCN3 and Protein A Magnetic Bead ([U0007](#)), and immunoblotted with rabbit polyclonal anti-FCN3.

## Specification

<b>Product Description</b>	This IP-WB antibody pair set comes with one antibody for immunoprecipitation and another to detect the precipitated protein in western blot.
<b>Reactivity</b>	Human
<b>Quality Control Testing</b>	Immunoprecipitation-Western Blot (IP-WB) Immunoprecipitation of FCN3 transfected lysate using mouse monoclonal anti-FCN3 and Protein A Magnetic Bead ( <a href="#">U0007</a> ), and immunoblotted with rabbit polyclonal anti-FCN3.
<b>Supplied Product</b>	Antibody pair set content: 1. Antibody pair for IP: mouse monoclonal anti-FCN3 (300 ul) 2. Antibody pair for WB: rabbit polyclonal anti-FCN3 (50 ul)
<b>Storage Instruction</b>	Store reagents of the antibody pair set at -20°C or lower. Please aliquot to avoid repeated freeze thaw cycle. Reagents should be returned to -20°C storage immediately after use.

## Applications

- Immunoprecipitation-Western Blot

[Protocol Download](#)

## Gene Info — FCN3

Entrez GeneID	<a href="#">8547</a>
Gene Name	FCN3
Gene Alias	FCNH, HAKA1, MGC22543
Gene Description	ficolin (collagen/fibrinogen domain containing) 3 (Hakata antigen)
Omim ID	<a href="#">604973</a>
Gene Ontology	<a href="#">Hyperlink</a>
Gene Summary	<p>Ficolins are a group of proteins which consist of a collagen-like domain and a fibrinogen-like domain. In human serum, there are two types of ficolins, both of which have lectin activity. The protein encoded by this gene is a thermolabile beta-2-macroglycoprotein found in all human serum and is a member of the ficolin/opsonin p35 lectin family. The protein, which was initially identified based on its reactivity with sera from patients with systemic lupus erythematosus, has been shown to have a calcium-independent lectin activity. The protein can activate the complement pathway in association with MASPs and sMAP, thereby aiding in host defense through the activation of the lectin pathway. Alternative splicing occurs at this locus and two variants, each encoding a distinct isoform, have been identified. [provided by RefSeq]</p>
Other Designations	H-ficolin Hakata antigen OTTHUMP00000006338 OTTHUMP00000006339 collagen/fibrinogen domain-containing lectin 3 p35 collagen/fibrinogen domain-containing protein 3 ficolin 3 ficolin-3

## Disease

- [Arthritis](#)
- [Genetic Predisposition to Disease](#)
- [Respiratory Tract Infections](#)