

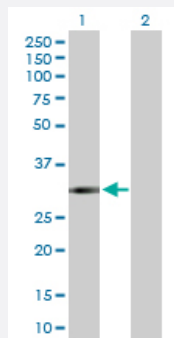
MaxPab®

## FCN3 purified MaxPab rabbit polyclonal antibody (D01P)

Catalog # H00008547-D01P

Size 100 ug

### Applications



#### Western Blot (Transfected lysate)

Western Blot analysis of FCN3 expression in transfected 293T cell line ([H00008547-T02](#)) by FCN3 MaxPab polyclonal antibody.

Lane 1: FCN3 transfected lysate(31.70 KDa).

Lane 2: Non-transfected lysate.

### Specification

Product Description	Rabbit polyclonal antibody raised against a full-length human FCN3 protein.
Immunogen	FCN3 (AAH20731.1, 1 a.a. ~ 288 a.a) full-length human protein.
Sequence	MDLLWILPSLWLLLLGGPACLKTQEHPSCPGPRELEASKVVLLPSCPGAPGSPGEKGAPGPQG PPGPPGKMGPKGEPGRNCRELLSQGATLSGWYHLCLPEGRALPVFCMDTEGGGWLVFQRR QDGSVDFFRSWSSYRAGFGNQSEFWLGNENLHQLTLQGNWELRVELEDfNGNRTFAHYATFR LLGEVDHYQLALGKFSEGTAGDSLHSGRPFTTYDADHDSSNSNCAVIVHGAWWYASCYRSNL NGRYAVSEAAAHKYGIDWASGRGVGHPYRRVRMMLR
Host	Rabbit
Reactivity	Human
Quality Control Testing	Antibody reactive against mammalian transfected lysate.
Storage Buffer	In 1x PBS, pH 7.4
Storage Instruction	Store at -20°C or lower. Aliquot to avoid repeated freezing and thawing.

## Applications

- Western Blot (Transfected lysate)

Western Blot analysis of FCN3 expression in transfected 293T cell line ([H00008547-T02](#)) by FCN3 MaxPab polyclonal antibody.

Lane 1: FCN3 transfected lysate(31.70 KDa).

Lane 2: Non-transfected lysate.

[Protocol Download](#)

## Gene Info — FCN3

Entrez GeneID [8547](#)

GeneBank Accession# [NM\\_173452.1](#)

Protein Accession# [AAH20731.1](#)

Gene Name FCN3

Gene Alias FCNH, HAKA1, MGC22543

Gene Description ficolin (collagen/fibrinogen domain containing) 3 (Hakata antigen)

Omim ID [604973](#)

Gene Ontology [Hyperlink](#)

**Gene Summary** Ficolins are a group of proteins which consist of a collagen-like domain and a fibrinogen-like domain. In human serum, there are two types of ficolins, both of which have lectin activity. The protein encoded by this gene is a thermolabile beta-2-macroglycoprotein found in all human serum and is a member of the ficolin/opsonin p35 lectin family. The protein, which was initially identified based on its reactivity with sera from patients with systemic lupus erythematosus, has been shown to have a calcium-independent lectin activity. The protein can activate the complement pathway in association with MASPs and sMAP, thereby aiding in host defense through the activation of the lectin pathway. Alternative splicing occurs at this locus and two variants, each encoding a distinct isoform, have been identified. [provided by RefSeq]

**Other Designations** H-ficolin|Hakata antigen|OTTHUMP00000006338|OTTHUMP00000006339|collagen/fibrinogen domain-containing lectin 3 p35|collagen/fibrinogen domain-containing protein 3|ficolin 3|ficolin-3

## Disease

- [Arthritis](#)

- [Genetic Predisposition to Disease](#)
- [Respiratory Tract Infections](#)