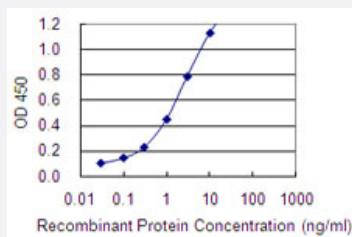


BARX2 monoclonal antibody (M01), clone 2B8

Catalog # H00008538-M01

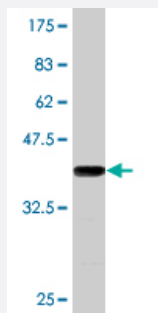
Size 50 ug

Applications



Sandwich ELISA (Recombinant protein)

Detection limit for recombinant GST tagged BARX2 is 0.03 ng/ml as a capture antibody.



Western Blot detection against Immunogen (36.74 KDa) .

Specification

Product Description	Mouse monoclonal antibody raised against a partial recombinant BARX2.
Immunogen	BARX2 (NP_003649, 161 a.a. ~ 260 a.a) partial recombinant protein with GST tag. MW of the GST tag alone is 26 KDa.
Sequence	PDRDLAQSLGLTQLQVKTWYQNRMMKWKMMVLKGGQEAPTKPKGRPKKNSIPTSEEIEAEEKM NSQAQGGEQLEPSQGQEELCEAQEPKARDVPLEMAE
Host	Mouse
Reactivity	Human

Interspecies Antigen Sequence	Mouse (89); Rat (89)
Isotype	IgG1 Kappa
Quality Control Testing	Antibody Reactive Against Recombinant Protein. Western Blot detection against Immunogen (36.74 KDa) .
Storage Buffer	In 1x PBS, pH 7.4
Storage Instruction	Store at -20°C or lower. Aliquot to avoid repeated freezing and thawing.

Applications

- Western Blot (Recombinant protein)

[Protocol Download](#)

- Sandwich ELISA (Recombinant protein)

Detection limit for recombinant GST tagged BARX2 is 0.03 ng/ml as a capture antibody.

[Protocol Download](#)

- ELISA

Gene Info — BARX2

Entrez GeneID	8538
GeneBank Accession#	NM_003658
Protein Accession#	NP_003649
Gene Name	BARX2
Gene Alias	MGC133368, MGC133369
Gene Description	BARX homeobox 2
Omim ID	604823
Gene Ontology	Hyperlink

Gene Summary

This gene encodes a member of the homeobox transcription factor family. A highly related protein in mouse has been shown to influence cellular processes that control cell adhesion and remodeling of the actin cytoskeleton in myoblast fusion and chondrogenesis. The encoded protein may also play a role in cancer progression. [provided by RefSeq]

Other Designations

BarH-like homeobox 2

Disease

- [Cleft Lip](#)
- [Cleft Palate](#)