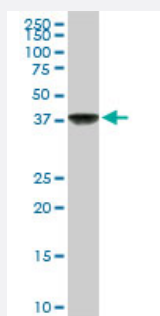


COPS3 monoclonal antibody (M02), clone 2D10

Catalog # H00008533-M02

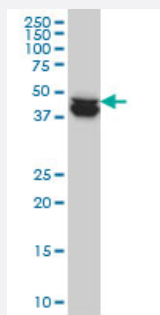
Size 50 ug

Applications



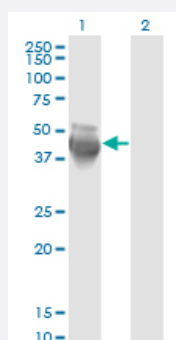
Western Blot (Cell lysate)

COPS3 monoclonal antibody (M02), clone 2D10. Western Blot analysis of COPS3 expression in PC-12 (Cat # L012V1).



Western Blot (Cell lysate)

COPS3 monoclonal antibody (M02), clone 2D10 Western Blot analysis of COPS3 expression in HeLa (Cat # L013V1).

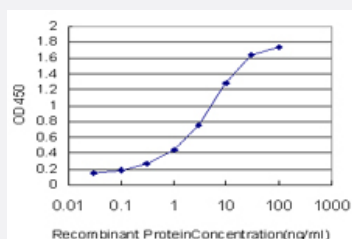


Western Blot (Transfected lysate)

Western Blot analysis of COPS3 expression in transfected 293T cell line by COPS3 monoclonal antibody (M02), clone 2D10.

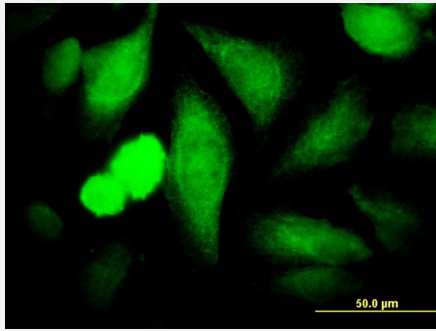
Lane 1: COPS3 transfected lysate(47.9 KDa).

Lane 2: Non-transfected lysate.



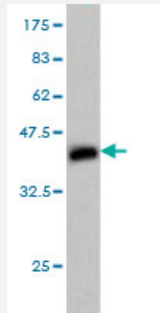
Sandwich ELISA (Recombinant protein)

Detection limit for recombinant GST tagged COPS3 is approximately 0.1ng/ml as a capture antibody.



Immunofluorescence

Immunofluorescence of monoclonal antibody to COPS3 on HeLa cell. [antibody concentration 20 ug/ml]



Western Blot detection against Immunogen (36.63 KDa) .

Specification

Product Description	Mouse monoclonal antibody raised against a partial recombinant COPS3.
Immunogen	COPS3 (NP_003644, 324 a.a. ~ 422 a.a) partial recombinant protein with GST tag. MW of the GST tag alone is 26 KDa.
Sequence	SRVQLSGPQEAKEYVLHMIEDGEIFASINQKDGMSVSHFDNPEKYNNPAMLHNIDQEMLKCIELDER LKAMDQEITVNPQFVQKSMGSQEDDSGNKPSSY
Host	Mouse
Reactivity	Human, Rat
Interspecies Antigen Sequence	Mouse (100); Rat (100)
Isotype	IgG2a Kappa
Quality Control Testing	Antibody Reactive Against Recombinant Protein. Western Blot detection against Immunogen (36.63 KDa) .
Storage Buffer	In 1x PBS, pH 7.4
Storage Instruction	Store at -20°C or lower. Aliquot to avoid repeated freezing and thawing.

Applications

- Western Blot (Cell lysate)

COPS3 monoclonal antibody (M02), clone 2D10. Western Blot analysis of COPS3 expression in PC-12 (Cat # L012V1).

[Protocol Download](#)

- Western Blot (Cell lysate)

COPS3 monoclonal antibody (M02), clone 2D10 Western Blot analysis of COPS3 expression in HeLa (Cat # L013V1).

[Protocol Download](#)

- Western Blot (Transfected lysate)

Western Blot analysis of COPS3 expression in transfected 293T cell line by COPS3 monoclonal antibody (M02), clone 2D10.

Lane 1: COPS3 transfected lysate(47.9 KDa).

Lane 2: Non-transfected lysate.

[Protocol Download](#)

- Western Blot (Recombinant protein)

[Protocol Download](#)

- Sandwich ELISA (Recombinant protein)

Detection limit for recombinant GST tagged COPS3 is approximately 0.1ng/ml as a capture antibody.

[Protocol Download](#)

- ELISA

- Immunofluorescence

Immunofluorescence of monoclonal antibody to COPS3 on HeLa cell. [antibody concentration 20 ug/ml]

Gene Info — COPS3

Entrez GeneID	8533
---------------	----------------------

GeneBank Accession#	NM_003653
---------------------	---------------------------

Protein Accession#	NP_003644
--------------------	---------------------------

Gene Name	COPS3
Gene Alias	CSN3, SGN3
Gene Description	COP9 constitutive photomorphogenic homolog subunit 3 (Arabidopsis)
Omim ID	604665
Gene Ontology	Hyperlink
Gene Summary	The protein encoded by this gene possesses kinase activity that phosphorylates regulators involved in signal transduction. It phosphorylates I kappa-Balpha, p105, and c-Jun. It acts as a docking site for complex-mediated phosphorylation. The gene is located within the Smith-Magenis syndrome region on chromosome 17. [provided by RefSeq]
Other Designations	COP9 complex subunit 3 COP9 constitutive photomorphogenic homolog subunit 3 JAB1-containing signalosome subunit 3