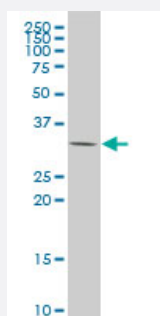


CSDA monoclonal antibody (M06), clone 1H5

Catalog # H00008531-M06

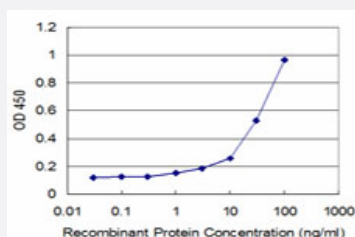
Size 100 ug

Applications



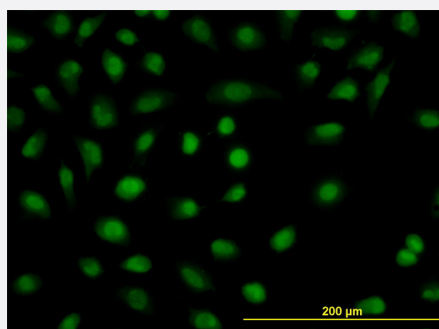
Western Blot (Cell lysate)

CSDA monoclonal antibody (M06), clone 1H5 Western Blot analysis of CSDA expression in HeLa (Cat # L013V1).



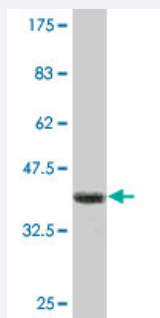
Sandwich ELISA (Recombinant protein)

Detection limit for recombinant GST tagged CSDA is approximately 3ng/ml as a capture antibody.



Immunofluorescence

Immunofluorescence of monoclonal antibody to CSDA on HeLa cell. [antibody concentration 10 ug/ml]



Western Blot detection against Immunogen (35.64 KDa) .

Specification

Product Description	Mouse monoclonal antibody raised against a partial recombinant CSDA.
Immunogen	CSDA (NP_003642, 241 a.a. ~ 330 a.a) partial recombinant protein with GST tag. MW of the GST tag alone is 26 KDa.
Sequence	HVGQTFDRRSRVLPHPNRIQAGEIGEMKDGVPGEAQLQGPVHRNPTYRPRYRSRGPPRPRPAPAVGEAEDKENQQATSGPNQPSVRRGYR
Host	Mouse
Reactivity	Human
Interspecies Antigen Sequence	Mouse (84); Rat (87)
Isotype	IgG2a Kappa
Quality Control Testing	Antibody Reactive Against Recombinant Protein. Western Blot detection against Immunogen (35.64 KDa) .
Storage Buffer	In 1x PBS, pH 7.4
Storage Instruction	Store at -20°C or lower. Aliquot to avoid repeated freezing and thawing.

Applications

- Western Blot (Cell lysate)

CSDA monoclonal antibody (M06), clone 1H5 Western Blot analysis of CSDA expression in HeLa (Cat # L013V1).

[Protocol Download](#)

- Western Blot (Recombinant protein)

[Protocol Download](#)

- Sandwich ELISA (Recombinant protein)

Detection limit for recombinant GST tagged CSDA is approximately 3ng/ml as a capture antibody.

[Protocol Download](#)

- ELISA

- Immunofluorescence

Immunofluorescence of monoclonal antibody to CSDA on HeLa cell. [antibody concentration 10 ug/ml]

Gene Info — CSDA

Entrez GeneID [8531](#)

GeneBank Accession# [NM_003651](#)

Protein Accession# [NP_003642](#)

Gene Name CSDA

Gene Alias CSDA1, DBPA, ZONAB

Gene Description cold shock domain protein A

Omim ID [603437](#)

Gene Ontology [Hyperlink](#)

Other Designations Cold-shock domain protein A|cold-shock domain containing A1

Pathway

- [Tight junction](#)

Disease

- [Celiac Disease](#)

- [Genetic Predisposition to Disease](#)