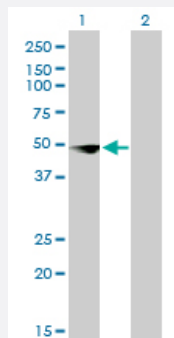


CSDA monoclonal antibody (M02), clone 4D9

Catalog # H00008531-M02

Size 100 ug

Applications

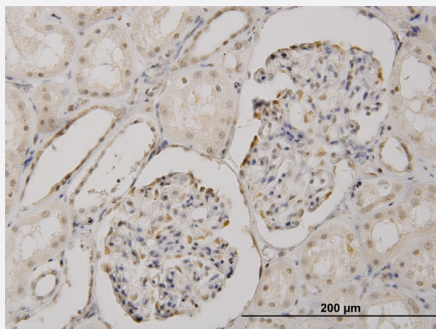


Western Blot (Transfected lysate)

Western Blot analysis of CSDA expression in transfected 293T cell line by CSDA monoclonal antibody (M02), clone 4D9.

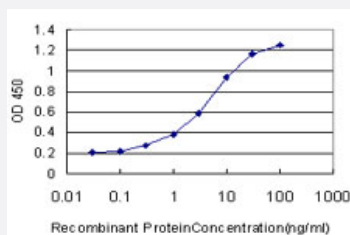
Lane 1: CSDA transfected lysate (40.1 KDa).

Lane 2: Non-transfected lysate.



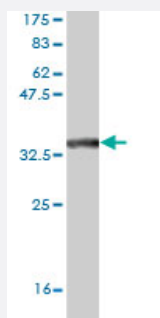
Immunohistochemistry (Formalin/PFA-fixed paraffin-embedded sections)

Immunoperoxidase of monoclonal antibody to CSDA on formalin-fixed paraffin-embedded human kidney. [antibody concentration 3 ug/ml]



Sandwich ELISA (Recombinant protein)

Detection limit for recombinant GST tagged CSDA is approximately 0.3ng/ml as a capture antibody.



Western Blot detection against Immunogen (35.64 KDa) .

Specification

Product Description	Mouse monoclonal antibody raised against a partial recombinant CSDA.
Immunogen	CSDA (NP_003642, 241 a.a. ~ 330 a.a) partial recombinant protein with GST tag. MW of the GST tag alone is 26 KDa.
Sequence	HVGQTFDRRSRVLPHPNRIQAGEIGEMKDGVPGEAQLQGPVHRNPTYRPRYRSRGPPRPRPAPA VGEAEDKENQQATSGPNQPSVRRGYR
Host	Mouse
Reactivity	Human
Interspecies Antigen Sequence	Mouse (84); Rat (87)
Isotype	IgG2b Kappa
Quality Control Testing	Antibody Reactive Against Recombinant Protein. Western Blot detection against Immunogen (35.64 KDa) .
Storage Buffer	In 1x PBS, pH 7.4
Storage Instruction	Store at -20°C or lower. Aliquot to avoid repeated freezing and thawing.

Applications

● Western Blot (Transfected lysate)

Western Blot analysis of CSDA expression in transfected 293T cell line by CSDA monoclonal antibody (M02), clone 4D9.

Lane 1: CSDA transfected lysate(40.1 KDa).

Lane 2: Non-transfected lysate.

[Protocol Download](#)

- Western Blot (Recombinant protein)

[Protocol Download](#)

- Immunohistochemistry (Formalin/PFA-fixed paraffin-embedded sections)

Immunoperoxidase of monoclonal antibody to CSDA on formalin-fixed paraffin-embedded human kidney. [antibody concentration 3 ug/ml]

[Protocol Download](#)

- Sandwich ELISA (Recombinant protein)

Detection limit for recombinant GST tagged CSDA is approximately 0.3ng/ml as a capture antibody.

[Protocol Download](#)

- ELISA

Gene Info — CSDA

Entrez GeneID [8531](#)

GeneBank Accession# [NM_003651](#)

Protein Accession# [NP_003642](#)

Gene Name CSDA

Gene Alias CSDA1, DBPA, ZONAB

Gene Description cold shock domain protein A

Omim ID [603437](#)

Gene Ontology [Hyperlink](#)

Other Designations Cold-shock domain protein A|cold-shock domain containing A1

Pathway

- [Tight junction](#)

Disease

- [Celiac Disease](#)
- [Genetic Predisposition to Disease](#)