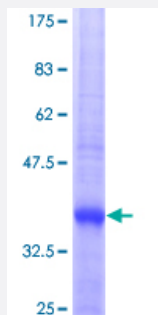


# MMP23B (Human) Recombinant Protein (Q01)

Catalog # H00008510-Q01

Size 25 ug, 10 ug

## Applications



## Specification

Product Description	Human MMP23B partial ORF ( NP_008914, 241 a.a. - 340 a.a.) recombinant protein with GST-tag at N-terminal.
Sequence	LSQDELWGLHRLYGCLDRLFVCASWARRGFCDARRRLMKRLCPSSCDFCYEFPFPTVATTPPP PRTKTRLVPEGRNVTFRCGQKILHKKGKVYWKDQEP
Host	Wheat Germ (in vitro)
Theoretical MW (kDa)	36.74
Interspecies Antigen Sequence	Mouse (89); Rat (87)
Preparation Method	<a href="#">in vitro wheat germ expression system</a>
Purification	Glutathione Sepharose 4 Fast Flow
Quality Control Testing	12.5% SDS-PAGE Stained with Coomassie Blue.
Storage Buffer	50 mM Tris-HCl, 10 mM reduced Glutathione, pH=8.0 in the elution buffer.
Storage Instruction	Store at -80°C. Aliquot to avoid repeated freezing and thawing.
Note	Best use within three months from the date of receipt of this protein.

## Applications

- Enzyme-linked Immunoabsorbent Assay
- Western Blot (Recombinant protein)
- Antibody Production
- Protein Array

## Gene Info — MMP23B

Entrez GeneID [8510](#)

GeneBank Accession# [NM\\_006983](#)

Protein Accession# [NP\\_008914](#)

Gene Name MMP23B

Gene Alias MIFR, MIFR-1, MMP22

Gene Description matrix metalloproteinase 23B

Omim ID [603321](#)

Gene Ontology [Hyperlink](#)

**Gene Summary** This gene (MMP23B) encodes a member of the matrix metalloproteinase (MMP) family, and it is part of a duplicated region of chromosome 1p36.3. Proteins of the matrix metalloproteinase (MMP) family are involved in the breakdown of extracellular matrix in normal physiological processes, such as embryonic development, reproduction, and tissue remodeling, as well as in disease processes, such as arthritis and metastasis. This gene belongs to the more telomeric copy of the duplicated region. [provided by RefSeq]

**Other Designations** OTTHUMP00000083434|femalysin|matrix metalloproteinase 22|matrix metalloproteinase 23B|matrix metalloproteinase in the female reproductive tract