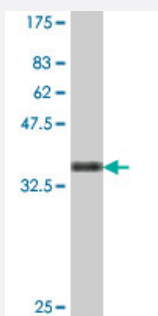


ENC1 polyclonal antibody (A01)

Catalog # H00008507-A01

Size 50 uL

Applications



Western Blot detection against Immunogen (35.13 KDa) .

Specification

Product Description	Mouse polyclonal antibody raised against a partial recombinant ENC1.
Immunogen	ENC1 (NP_003624, 17 a.a. ~ 98 a.a) partial recombinant protein with GST tag.
Sequence	SINYLFBKSSYADSVLTHLNLLRQQRLFTDVLLHAGNRTFPCBRAVLAACSRFEAMFSGGLKES QDSEVNFDNSIHPEVL
Host	Mouse
Reactivity	Human
Interspecies Antigen Sequence	Mouse (100); Rat (100)
Quality Control Testing	Antibody Reactive Against Recombinant Protein. Western Blot detection against Immunogen (35.13 KDa) .
Storage Buffer	50 % glycerol
Storage Instruction	Store at -20°C or lower. Aliquot to avoid repeated freezing and thawing.

Applications

- Western Blot (Recombinant protein)

[Protocol Download](#)

- ELISA

Gene Info — ENC1

Entrez GeneID [8507](#)

GeneBank Accession# [NM_003633](#)

Protein Accession# [NP_003624](#)

Gene Name ENC1

Gene Alias CCL28, ENC-1, FLJ39259, KLHL35, KLHL37, NRPB, PIG10, TP53I10

Gene Description ectodermal-neural cortex (with BTB-like domain)

Omim ID [605173](#)

Gene Ontology [Hyperlink](#)

Gene Summary

DNA damage and/or hyperproliferative signals activate wildtype p53 tumor suppressor protein (TP53; MIM 191170), inducing cell cycle arrest or apoptosis. Mutations that inactivate p53 occur in 50% of all tumors. Polyak et al. (1997) [PubMed 9305847] used serial analysis of gene expression (SAGE) to evaluate cellular mRNA levels in a colorectal cancer cell line transfected with p53. Of 7,202 transcripts identified, only 14 were expressed at levels more than 10-fold higher in p53-expressing cells than in control cells. Polyak et al. (1997) [PubMed 9305847] termed these genes 'p53-induced genes,' or PIGs, several of which were predicted to encode redox-controlling proteins. They noted that reactive oxygen species (ROS) are potent inducers of apoptosis. Flow cytometric analysis showed that p53 expression induces ROS production, which increases as apoptosis progresses under some conditions. The authors stated that the PIG10 gene, also called ENC1, encodes an actin-binding protein.[supplied by OMIM]

Other Designations

kelch-like 35|kelch-like 37|nuclear restricted protein, BTB domain-like (brain)|tumor protein p53 inducible protein 10