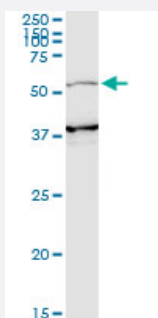


PIK3R3 monoclonal antibody (M02), clone 2F8

Catalog # H00008503-M02

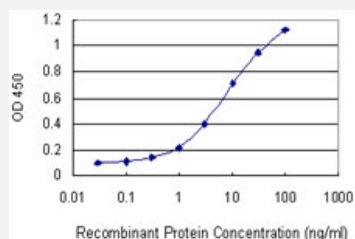
Size 100 ug

Applications



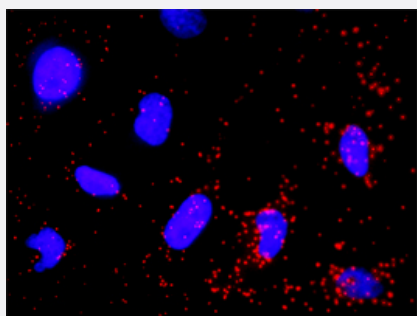
Western Blot (Tissue lysate)

PIK3R3 monoclonal antibody (M02), clone 2F8. Western Blot analysis of PIK3R3 expression in human spleen.



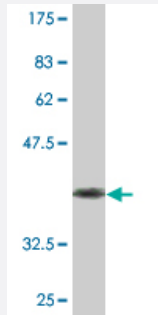
Sandwich ELISA (Recombinant protein)

Detection limit for recombinant GST tagged PIK3R3 is 0.1 ng/ml as a capture antibody.



In situ Proximity Ligation Assay (Cell)

Proximity Ligation Analysis of protein-protein interactions between EGFR and PIK3R3. HeLa cells were stained with anti-EGFR rabbit purified polyclonal 1:1200 and anti-PIK3R3 mouse monoclonal antibody 1:50. Each red dot represents the detection of protein-protein interaction complex, and nuclei were counterstained with DAPI (blue).



Western Blot detection against Immunogen (37.84 KDa) .

Specification

Product Description	Mouse monoclonal antibody raised against a partial recombinant PIK3R3.
Immunogen	PIK3R3 (AAH21622, 271 a.a. ~ 380 a.a) partial recombinant protein with GST tag. MW of the GST tag alone is 26 KDa.
Sequence	HDSKMRLEQDLKNQALDNREIDKKMNSIKPDLIQLRKIRDQHLVWLNHKGVRQKRLNVWLGKNE DAAENYFINEEDENLPHYDEKTFWFVEDINRVQAEDLLYGKPDGAF
Host	Mouse
Reactivity	Human
Interspecies Antigen Sequence	Mouse (93)
Isotype	IgG2a Kappa
Quality Control Testing	Antibody Reactive Against Recombinant Protein. Western Blot detection against Immunogen (37.84 KDa) .
Storage Buffer	In 1x PBS, pH 7.4
Storage Instruction	Store at -20°C or lower. Aliquot to avoid repeated freezing and thawing.

Applications

- Western Blot (Tissue lysate)

PIK3R3 monoclonal antibody (M02), clone 2F8. Western Blot analysis of PIK3R3 expression in human spleen.

[Protocol Download](#)

- Western Blot (Recombinant protein)

[Protocol Download](#)

- Sandwich ELISA (Recombinant protein)

Detection limit for recombinant GST tagged PIK3R3 is 0.1 ng/ml as a capture antibody.

[Protocol Download](#)

- ELISA

- In situ* Proximity Ligation Assay (Cell)

Proximity Ligation Analysis of protein-protein interactions between EGFR and PIK3R3. HeLa cells were stained with anti-EGFR rabbit purified polyclonal 1:1200 and anti-PIK3R3 mouse monoclonal antibody 1:50. Each red dot represents the detection of protein-protein interaction complex, and nuclei were counterstained with DAPI (blue).

Gene Info — PIK3R3

Entrez GeneID [8503](#)

GeneBank Accession# [BC021622](#)

Protein Accession# [AAH21622](#)

Gene Name PIK3R3

Gene Alias DKFZp686P05226, FLJ41892, p55, p55-GAMMA

Gene Description phosphoinositide-3-kinase, regulatory subunit 3 (gamma)

Omim ID [606076](#)

Gene Ontology [Hyperlink](#)

Gene Summary O

Other Designations 100% homology to SWISS-PROT Q92569|OTTHUMP00000009783|OTTHUMP00000009786|phosphatidylinositol 3-kinase, regulatory subunit, polypeptide 3 (p55, gamma)|phosphoinositide-3-kinase, regulatory subunit 3 (p55, gamma)|phosphoinositide-3-kinase, regulatory subun

Pathway

- [Acute myeloid leukemia](#)

- [Apoptosis](#)
- [B cell receptor signaling pathway](#)
- [Chemokine signaling pathway](#)
- [Chronic myeloid leukemia](#)
- [Colorectal cancer](#)
- [Endometrial cancer](#)
- [ErbB signaling pathway](#)
- [Fc epsilon RI signaling pathway](#)
- [Fc gamma R-mediated phagocytosis](#)
- [Focal adhesion](#)
- [Glioma](#)
- [Insulin signaling pathway](#)
- [Jak-STAT signaling pathway](#)
- [Leukocyte transendothelial migration](#)
- [Melanoma](#)
- [mTOR signaling pathway](#)
- [Natural killer cell mediated cytotoxicity](#)
- [Neurotrophin signaling pathway](#)
- [Non-small cell lung cancer](#)
- [Pancreatic cancer](#)
- [Pathways in cancer](#)
- [Phosphatidylinositol signaling system](#)
- [Prostate cancer](#)
- [Regulation of actin cytoskeleton](#)
- [Renal cell carcinoma](#)
- [Small cell lung cancer](#)

- [T cell receptor signaling pathway](#)
- [Toll-like receptor signaling pathway](#)
- [Type II diabetes mellitus](#)
- [VEGF signaling pathway](#)

Disease

- [Genetic Predisposition to Disease](#)
- [Prostatic Neoplasms](#)
- [Tobacco Use Disorder](#)