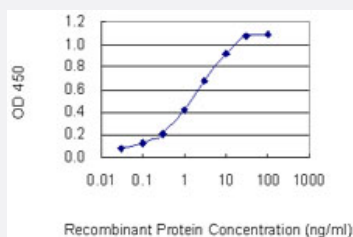


# PRSS12 monoclonal antibody (M02), clone 1C3

Catalog # H00008492-M02

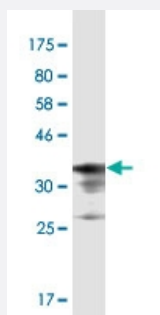
Size 100 ug

## Applications



### Sandwich ELISA (Recombinant protein)

Detection limit for recombinant GST tagged PRSS12 is 0.03 ng/ml as a capture antibody.



Western Blot detection against Immunogen (36.74 KDa) .

## Specification

### Product Description

Mouse monoclonal antibody raised against a partial recombinant PRSS12.

### Immunogen

PRSS12 (NP\_003610.1, 541 a.a. ~ 640 a.a) partial recombinant protein with GST tag. MW of the GST tag alone is 26 KDa.

### Sequence

LG YKGPARARTMAYFGEGKGPIHVDNVKCTGNERSLADCIKQDIGRHNCRHSEDAGVICDYFGKK  
ASGNSNKESLSSVCGLRLLHRRQKRIGGKNSLRG

### Host

Mouse

### Reactivity

Human

### Isotype

IgG1 Kappa

**Quality Control Testing**

Antibody Reactive Against Recombinant Protein.  
Western Blot detection against Immunogen (36.74 KDa) .

**Storage Buffer**

In 1x PBS, pH 7.4

**Storage Instruction**

Store at -20°C or lower. Aliquot to avoid repeated freezing and thawing.

## Applications

- Western Blot (Recombinant protein)

[Protocol Download](#)

- Sandwich ELISA (Recombinant protein)

Detection limit for recombinant GST tagged PRSS12 is 0.03 ng/ml as a capture antibody.

[Protocol Download](#)

- ELISA

## Gene Info — PRSS12

**Entrez GeneID**

[8492](#)

**GeneBank Accession#**

[NM\\_003619](#)

**Protein Accession#**

[NP\\_003610.1](#)

**Gene Name**

PRSS12

**Gene Alias**

BSSP-3, BSSP3, MGC12722, MRT1

**Gene Description**

protease, serine, 12 (neurotrypsin, motopsin)

**Omim ID**

[249500 606709](#)

**Gene Ontology**

[Hyperlink](#)

**Gene Summary**

This gene encodes a member of the trypsin family of serine proteases. Studies in mouse suggest that the encoded enzyme may be involved in structural reorganizations associated with learning and memory. The enzyme is also expressed in Leydig cells in the testis, but its function in this tissue is unknown. [provided by RefSeq]

**Other Designations**

brain-specific serine protease 3|leydin|motopsin|neurotrypsin

## Disease

- [Alcoholism](#)
- [Genetic Predisposition to Disease](#)