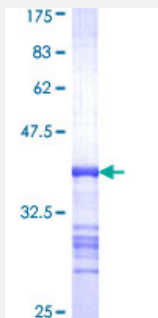


# CDC42BPA (Human) Recombinant Protein (Q01)

Catalog # H00008476-Q01

Size 25 ug, 10 ug

## Applications



## Specification

<b>Product Description</b>	Human CDC42BPA partial ORF ( NP_003598, 551 a.a. - 650 a.a.) recombinant protein with GST-tag at N-terminal.
<b>Sequence</b>	LVQASERLKNQSKELKDAHCQRKLAMQEFMEINERLTHTQKQKLARHVRDKEEEVDLVMQKV ESLRQELRRTERAKKELEVHTEALAAEASKDRKLRE
<b>Host</b>	Wheat Germ (in vitro)
<b>Theoretical MW (kDa)</b>	36.63
<b>Interspecies Antigen Sequence</b>	Mouse (96)
<b>Preparation Method</b>	<a href="#">in vitro wheat germ expression system</a>
<b>Purification</b>	Glutathione Sepharose 4 Fast Flow
<b>Quality Control Testing</b>	12.5% SDS-PAGE Stained with Coomassie Blue.
<b>Storage Buffer</b>	50 mM Tris-HCl, 10 mM reduced Glutathione, pH=8.0 in the elution buffer.
<b>Storage Instruction</b>	Store at -80°C. Aliquot to avoid repeated freezing and thawing.
<b>Note</b>	Best use within three months from the date of receipt of this protein.

## Applications

- Enzyme-linked Immunoabsorbent Assay
- Western Blot (Recombinant protein)
- Antibody Production
- Protein Array

## Gene Info — CDC42BPA

Entrez GeneID [8476](#)

GeneBank Accession# [NM\\_003607](#)

Protein Accession# [NP\\_003598](#)

Gene Name CDC42BPA

Gene Alias DKFZp686L1738, DKFZp686P1738, FLJ23347, KIAA0451, MRCK, MRCKA, PK428

Gene Description CDC42 binding protein kinase alpha (DMPK-like)

Omim ID [603412](#)

Gene Ontology [Hyperlink](#)

**Gene Summary** The protein encoded by this gene is a member of the Serine/Threonine protein kinase family. This kinase contains multiple functional domains. Its kinase domain is highly similar to that of the myotonic dystrophy protein kinase (DMPK). This kinase also contains a Rac interactive binding (CRIB) domain, and has been shown to bind CDC42. It may function as a CDC42 downstream effector mediating CDC42 induced peripheral actin formation, and promoting cytoskeletal reorganization. Multiple alternatively spliced transcript variants have been described, and the full-length nature of two of them has been reported. [provided by RefSeq]

**Other Designations** CDC42 binding protein kinase beta|CDC42-binding protein kinase alpha|CDC42-binding protein kinase alpha (DMPK-like)|OTTHUMP00000035727|OTTHUMP00000035728|myotonic dystrophy kinase-related CDC42-binding protein kinase alpha|ser-thr protein kinase PK428|ser

## Disease

- [Kidney Failure](#)