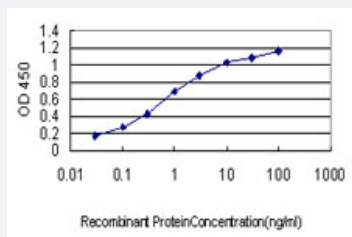


CDC42BPA monoclonal antibody (M01), clone 1G7

Catalog # H00008476-M01

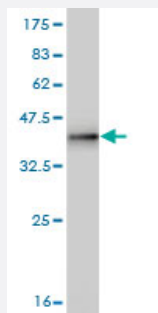
Size 100 ug

Applications



Sandwich ELISA (Recombinant protein)

Detection limit for recombinant GST tagged CDC42BPA is approximately 0.03ng/ml as a capture antibody.



Western Blot detection against Immunogen (36.63 KDa) .

Specification

Product Description	Mouse monoclonal antibody raised against a partial recombinant CDC42BPA.
Immunogen	CDC42BPA (NP_003598, 551 a.a. ~ 650 a.a) partial recombinant protein with GST tag. MW of the GST tag alone is 26 KDa.
Sequence	LVQASERLKNQSKELKDAHCQRKLAMQEFMEINERLTELHTQKQKLARHVRDKEEEVDLVMQKV ESLRQELRRTERAKKELEVHTEALAAEASKDRKLRE
Host	Mouse
Reactivity	Human

Interspecies Antigen Sequence	Mouse (96)
Isotype	IgG1 Kappa
Quality Control Testing	Antibody Reactive Against Recombinant Protein. Western Blot detection against Immunogen (36.63 KDa) .
Storage Buffer	In 1x PBS, pH 7.4
Storage Instruction	Store at -20°C or lower. Aliquot to avoid repeated freezing and thawing.

Applications

- Western Blot (Recombinant protein)

[Protocol Download](#)

- Sandwich ELISA (Recombinant protein)

Detection limit for recombinant GST tagged CDC42BPA is approximately 0.03ng/ml as a capture antibody.

[Protocol Download](#)

- ELISA

Gene Info — CDC42BPA

Entrez GeneID	8476
GeneBank Accession#	NM_003607
Protein Accession#	NP_003598
Gene Name	CDC42BPA
Gene Alias	DKFZp686L1738, DKFZp686P1738, FLJ23347, KIAA0451, MRCK, MRCKA, PK428
Gene Description	CDC42 binding protein kinase alpha (DMPK-like)
Omim ID	603412
Gene Ontology	Hyperlink

Gene Summary

The protein encoded by this gene is a member of the Serine/Threonine protein kinase family. This kinase contains multiple functional domains. Its kinase domain is highly similar to that of the myotonic dystrophy protein kinase (DMPK). This kinase also contains a Rac interactive binding (CRIB) domain, and has been shown to bind CDC42. It may function as a CDC42 downstream effector mediating CDC42 induced peripheral actin formation, and promoting cytoskeletal reorganization. Multiple alternatively spliced transcript variants have been described, and the full-length nature of two of them has been reported. [provided by RefSeq]

Other Designations

CDC42 binding protein kinase beta|CDC42-binding protein kinase alpha|CDC42-binding protein kinase alpha (DMPK-like)|OTTHUMP00000035727|OTTHUMP00000035728|myotonic dystrophy kinase-related CDC42-binding protein kinase alpha|ser-thr protein kinase PK428|ser

Disease

- [Kidney Failure](#)