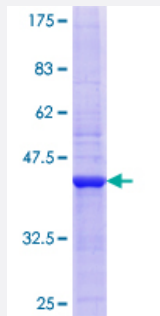


FKBP6 (Human) Recombinant Protein (Q01)

Catalog # H00008468-Q01

Size 25 ug, 10 ug

Applications



Specification

Product Description	Human FKBP6 partial ORF (NP_003593.2, 1 a.a. - 108 a.a.) recombinant protein with GST-tag at N-terminal.
Sequence	MGGSALNQGVLEGDDAPGQSLYERLSQRMLDISGDRGVLKDVIREGAGDLVAPDASVLVKYYGY LEHLDRPFDSNYFRKTPRLMKLGEDITLWGMELGLLSMQRGELA
Host	Wheat Germ (in vitro)
Theoretical MW (kDa)	37.62
Preparation Method	in vitro wheat germ expression system
Purification	Glutathione Sepharose 4 Fast Flow
Quality Control Testing	12.5% SDS-PAGE Stained with Coomassie Blue.
Storage Buffer	50 mM Tris-HCl, 10 mM reduced Glutathione, pH=8.0 in the elution buffer.
Storage Instruction	Store at -80°C. Aliquot to avoid repeated freezing and thawing.
Note	Best use within three months from the date of receipt of this protein.

Applications

- Enzyme-linked Immunoabsorbent Assay
- Western Blot (Recombinant protein)
- Antibody Production
- Protein Array

Gene Info — FKBP6

Entrez GeneID [8468](#)

GeneBank Accession# [NM_003602](#)

Protein Accession# [NP_003593.2](#)

Gene Name FKBP6

Gene Alias FKBP36, MGC87179, PPlase

Gene Description FK506 binding protein 6, 36kDa

Omim ID [604839](#)

Gene Ontology [Hyperlink](#)

Gene Summary The protein encoded by this gene is a member of the immunophilin protein family, which play a role in immunoregulation and basic cellular processes involving protein folding and trafficking. The protein may have cis-trans prolyl isomerase activity, and binds to clathrin heavy chain and heat shock protein 72. This gene is found to be deleted in Williams syndrome, and the orthologous gene in mouse is essential for fertility and homologous pairing in male meiosis. [provided by RefSeq]

Other Designations FK506 binding protein 6|FK506 binding protein 6 (36kD)|FK506-binding protein 6 (36kD)|immunophilin FKBP36|peptidylprolyl cis-trans isomerase|rotamase

Disease

- [Azoospermia](#)
- [Genetic Predisposition to Disease](#)
- [Infertility](#)

- [Oligospermia](#)