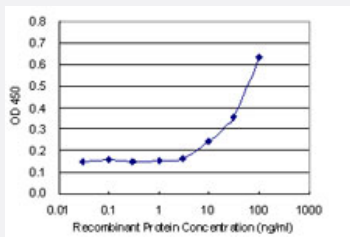


FKBP6 monoclonal antibody (M01), clone 8F10

Catalog # H00008468-M01

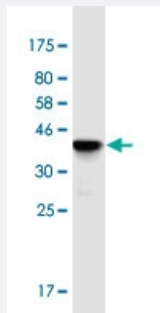
Size 100 ug

Applications



Sandwich ELISA (Recombinant protein)

Detection limit for recombinant GST tagged FKBP6 is 3 ng/ml as a capture antibody.



Western Blot detection against Immunogen (37.62 KDa) .

Specification

Product Description

Mouse monoclonal antibody raised against a partial recombinant FKBP6.

Immunogen

FKBP6 (NP_003593.2, 1 a.a. ~ 108 a.a) partial recombinant protein with GST tag. MW of the GST tag alone is 26 KDa.

Sequence

MGGSALNQGVLEGDDAPGQSLYERLSQRMLDISGDRGVLKDVIREGAGDLVAPDASVLVKYYGY
LEHLDRPFDSNYFRKTPRLMKLGEDITLWGMELGLLSMQRGELA

Host

Mouse

Reactivity

Human

Isotype

IgG2a Kappa

Quality Control Testing

Antibody Reactive Against Recombinant Protein.
Western Blot detection against Immunogen (37.62 KDa) .

Storage Buffer

In 1x PBS, pH 7.4

Storage Instruction

Store at -20°C or lower. Aliquot to avoid repeated freezing and thawing.

Applications

- Western Blot (Recombinant protein)

[Protocol Download](#)

- Sandwich ELISA (Recombinant protein)

Detection limit for recombinant GST tagged FKBP6 is 3 ng/ml as a capture antibody.

[Protocol Download](#)

- ELISA

Gene Info — FKBP6

Entrez GeneID

[8468](#)

GeneBank Accession#

[NM_003602](#)

Protein Accession#

[NP_003593.2](#)

Gene Name

FKBP6

Gene Alias

FKBP36, MGC87179, PPIase

Gene Description

FK506 binding protein 6, 36kDa

Omim ID

[604839](#)

Gene Ontology

[Hyperlink](#)

Gene Summary

The protein encoded by this gene is a member of the immunophilin protein family, which play a role in immunoregulation and basic cellular processes involving protein folding and trafficking. The protein may have cis-trans prolyl isomerase activity, and binds to clathrin heavy chain and heat shock protein 72. This gene is found to be deleted in Williams syndrome, and the orthologous gene in mouse is essential for fertility and homologous pairing in male meiosis. [provided by RefSeq]

Other Designations

FK506 binding protein 6|FK506 binding protein 6 (36kD)|FK506-binding protein 6 (36kD)|immunophilin FKBP36|peptidylprolyl cis-trans isomerase|rotamase

Disease

- [Azoospermia](#)
- [Genetic Predisposition to Disease](#)
- [Infertility](#)
- [Oligospermia](#)