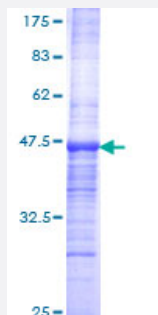


SMARCA5 (Human) Recombinant Protein (Q01)

Catalog # H00008467-Q01

Size 25 ug, 10 ug

Applications



Specification

Product Description	Human SMARCA5 partial ORF (NP_003592, 59 a.a. - 147 a.a.) recombinant protein with GST-tag at N-terminal.
Sequence	EEIFDDASPGKQKEIQEPDPTYEEKMQTDRANRFEYLLKQTELF AHFIQPAAQKTPTSPLKMKPGR PRIKKDEKQNLLSVGDYRHRTE
Host	Wheat Germ (in vitro)
Theoretical MW (kDa)	35.53
Interspecies Antigen Sequence	Mouse (96); Rat (97)
Preparation Method	in vitro wheat germ expression system
Purification	Glutathione Sepharose 4 Fast Flow
Quality Control Testing	12.5% SDS-PAGE Stained with Coomassie Blue.
Storage Buffer	50 mM Tris-HCl, 10 mM reduced Glutathione, pH=8.0 in the elution buffer.
Storage Instruction	Store at -80°C. Aliquot to avoid repeated freezing and thawing.
Note	Best use within three months from the date of receipt of this protein.

Applications

- Enzyme-linked Immunoabsorbent Assay
- Western Blot (Recombinant protein)
- Antibody Production
- Protein Array

Gene Info — SMARCA5

Entrez GeneID	8467
GeneBank Accession#	NM_003601
Protein Accession#	NP_003592
Gene Name	SMARCA5
Gene Alias	ISWI, SNF2H, WCRF135, hISWI, hSNF2H
Gene Description	SWI/SNF related, matrix associated, actin dependent regulator of chromatin, subfamily a, member 5
Omim ID	603375
Gene Ontology	Hyperlink
Gene Summary	The protein encoded by this gene is a member of the SWI/SNF family of proteins. Members of this family have helicase and ATPase activities and are thought to regulate transcription of certain genes by altering the chromatin structure around those genes. The protein encoded by this gene is a component of the chromatin remodeling and spacing factor RSF, a facilitator of the transcription of class II genes by RNA polymerase II. The encoded protein is similar in sequence to the Drosophila ISWI chromatin remodeling protein. [provided by RefSeq]
Other Designations	SWI/SNF-related matrix-associated actin-dependent regulator of chromatin a5 sucrose nonfermenting-like 5