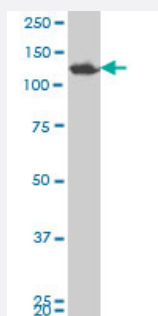


# SMARCA5 polyclonal antibody (A01)

Catalog # H00008467-A01

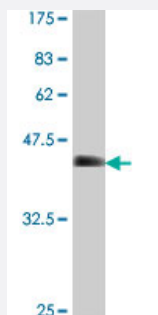
Size 50 uL

## Applications



### Western Blot (Cell lysate)

SMARCA5 polyclonal antibody (A01), Lot # 051018JC01 Western Blot analysis of SMARCA5 expression in Y-79 ( Cat # L042V1 ).



Western Blot detection against Immunogen (35.9 KDa) .

## Specification

Product Description	Mouse polyclonal antibody raised against a partial recombinant SMARCA5.
Immunogen	SMARCA5 (NP_003592, 59 a.a. ~ 147 a.a) partial recombinant protein with GST tag.
Sequence	EEIFDDASPGKQKEIQEPDPTYEEKMQTDRANRFEYLLKQTELF AHFIQPAAQKTPTSPLKMKPGR PRIKKDEKQNLLSVGDYRHRTE
Host	Mouse
Reactivity	Human
Interspecies Antigen Sequence	Mouse (96); Rat (97)

**Quality Control Testing**

Antibody Reactive Against Recombinant Protein.  
Western Blot detection against Immunogen (35.9 KDa) .

**Storage Buffer**

50 % glycerol

**Storage Instruction**

Store at -20°C or lower. Aliquot to avoid repeated freezing and thawing.

## Applications

- Western Blot (Cell lysate)

SMARCA5 polyclonal antibody (A01), Lot # 051018JC01 Western Blot analysis of SMARCA5 expression in Y-79 ( Cat # L042V1 ).

[Protocol Download](#)

- Western Blot (Recombinant protein)

[Protocol Download](#)

- ELISA

## Gene Info — SMARCA5

**Entrez GeneID**

[8467](#)

**GeneBank Accession#**

[NM\\_003601](#)

**Protein Accession#**

[NP\\_003592](#)

**Gene Name**

SMARCA5

**Gene Alias**

ISWI, SNF2H, WCRF135, hISWI, hSNF2H

**Gene Description**

SWI/SNF related, matrix associated, actin dependent regulator of chromatin, subfamily a, member 5

**Omim ID**

[603375](#)

**Gene Ontology**

[Hyperlink](#)

**Gene Summary**

The protein encoded by this gene is a member of the SWI/SNF family of proteins. Members of this family have helicase and ATPase activities and are thought to regulate transcription of certain genes by altering the chromatin structure around those genes. The protein encoded by this gene is a component of the chromatin remodeling and spacing factor RSF, a facilitator of the transcription of class II genes by RNA polymerase II. The encoded protein is similar in sequence to the Drosophila ISWI chromatin remodeling protein. [provided by RefSeq]

**Other Designations**

SWI/SNF-related matrix-associated actin-dependent regulator of chromatin a5|sucrose nonfermenting-like 5