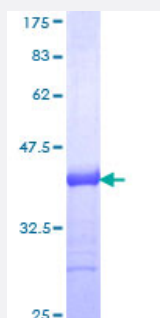


TTF2 (Human) Recombinant Protein (Q01)

Catalog # H00008458-Q01

Size 25 ug, 10 ug

Applications



Specification

| | |
|--------------------------------------|--|
| Product Description | Human TTF2 partial ORF (NP_003585, 2 a.a. - 100 a.a.) recombinant protein with GST-tag at N-terminal. |
| Sequence | EEVRCPEHGTFCLKTGVRDGPNGKGSFYVCRADTCSFVRATDIPVSHCLLHEDFVVELQGLLL PQDKKEYRLFFRCIRSKAEGKRWCGSIPWQDPDSK |
| Host | Wheat Germ (in vitro) |
| Theoretical MW (kDa) | 36.63 |
| Interspecies Antigen Sequence | Mouse (82); Rat (81) |
| Preparation Method | in vitro wheat germ expression system |
| Purification | Glutathione Sepharose 4 Fast Flow |
| Quality Control Testing | 12.5% SDS-PAGE Stained with Coomassie Blue. |
| Storage Buffer | 50 mM Tris-HCl, 10 mM reduced Glutathione, pH=8.0 in the elution buffer. |
| Storage Instruction | Store at -80°C. Aliquot to avoid repeated freezing and thawing. |
| Note | Best use within three months from the date of receipt of this protein. |

Applications

- Enzyme-linked Immunoabsorbent Assay
- Western Blot (Recombinant protein)
- Antibody Production
- Protein Array

Gene Info — TTF2

Entrez GeneID [8458](#)

GeneBank Accession# [NM_003594](#)

Protein Accession# [NP_003585](#)

Gene Name TTF2

Gene Alias HuF2

Gene Description transcription termination factor, RNA polymerase II

Omim ID [604718](#)

Gene Ontology [Hyperlink](#)

Gene Summary This gene encodes a member of the SWI2/SNF2 family of proteins, which play a critical role in altering protein-DNA interactions. The encoded protein has been shown to have dsDNA-dependent ATPase activity and RNA polymerase II termination activity. This protein interacts with cell division cycle 5-like, associates with human splicing complexes, and plays a role in pre-mRNA splicing. [provided by RefSeq]

Other Designations OTTHUMP00000013818|human factor 2|odestar protein

Disease

- [Cleft Palate](#)
- [Congenital Hypothyroidism](#)
- [Hypothyroidism](#)