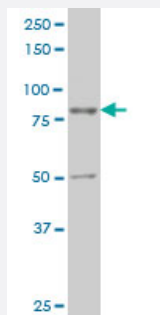


TTF2 monoclonal antibody (M12), clone 2B6

Catalog # H00008458-M12

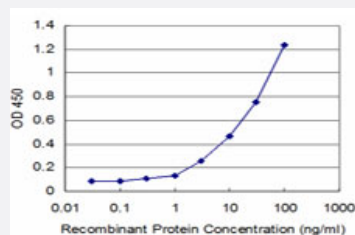
Size 100 ug

Applications



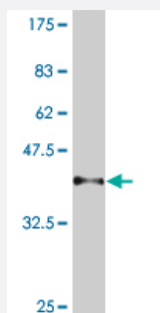
Western Blot (Cell lysate)

TTF2 monoclonal antibody (M12), clone 2B6 Western Blot analysis of TTF2 expression in MES-SA/Dx5 (Cat # L021V1).



Sandwich ELISA (Recombinant protein)

Detection limit for recombinant GST tagged TTF2 is approximately 1ng/ml as a capture antibody.



Western Blot detection against Immunogen (39.75 KDa) .

Specification

Product Description

Mouse monoclonal antibody raised against a full length recombinant TTF2.

Immunogen	TTF2 (NP_003585, 385 a.a. ~ 509 a.a) full length recombinant protein with GST tag. MW of the GST tag alone is 26 KDa.
Sequence	QFPDRSVQRKVSPASGVSKKVEPSDPVARRVYLTTQLKQKKSTLASVNIQALPDKGQKLIKQIQE LEEVL SGLT L SPEQGTNEKSNSQVPQQSHFTKTTTGPPHLVPPQPLPRRGTPVGSLELK
Host	Mouse
Reactivity	Human
Interspecies Antigen Sequence	Mouse (66); Rat (66)
Isotype	IgG2a Kappa
Quality Control Testing	Antibody Reactive Against Recombinant Protein. Western Blot detection against Immunogen (39.75 KDa) .
Storage Buffer	In 1x PBS, pH 7.4
Storage Instruction	Store at -20°C or lower. Aliquot to avoid repeated freezing and thawing.

Applications

- Western Blot (Cell lysate)

TTF2 monoclonal antibody (M12), clone 2B6 Western Blot analysis of TTF2 expression in MES-SA/Dx5 (Cat # L021V1).

[Protocol Download](#)

- Western Blot (Recombinant protein)

[Protocol Download](#)

- Sandwich ELISA (Recombinant protein)

Detection limit for recombinant GST tagged TTF2 is approximately 1ng/ml as a capture antibody.

[Protocol Download](#)

- ELISA

Gene Info — TTF2

Entrez GeneID [8458](#)

GeneBank Accession#	NM_003594
Protein Accession#	NP_003585
Gene Name	TTF2
Gene Alias	HuF2
Gene Description	transcription termination factor, RNA polymerase II
Omim ID	604718
Gene Ontology	Hyperlink
Gene Summary	This gene encodes a member of the SWI2/SNF2 family of proteins, which play a critical role in altering protein-DNA interactions. The encoded protein has been shown to have dsDNA-dependent ATPase activity and RNA polymerase II termination activity. This protein interacts with cell division cycle 5-like, associates with human splicing complexes, and plays a role in pre-mRNA splicing. [provided by RefSeq]
Other Designations	OTTHUMP00000013818 human factor 2 lodestar protein

Disease

- [Cleft Palate](#)
- [Congenital Hypothyroidism](#)
- [Hypothyroidism](#)