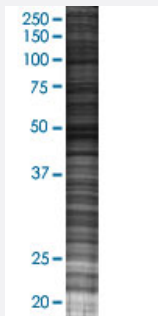


DOC2B 293T Cell Transient Overexpression Lysate(Denatured)

Catalog # H00008447-T02

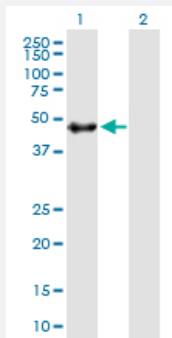
Size 100 uL

Applications



SDS-PAGE Gel

DOC2B transfected lysate.



Western Blot

Lane 1: DOC2B transfected lysate (45.32 KDa)

Lane 2: Non-transfected lysate.

Specification

Transfected Cell Line	293T
Plasmid	pCMV-DOC2B full-length
Host	Human
Theoretical MW (kDa)	45.32
Interspecies Antigen Sequence	Mouse (95); Rat (95)

Quality Control Testing

Transient overexpression cell lysate was tested with Anti-DOC2B antibody ([H00008447-B01P](#)) by Western Blots.
SDS-PAGE Gel
DOC2B transfected lysate.
Western Blot
Lane 1: DOC2B transfected lysate (45.32 KDa)
Lane 2: Non-transfected lysate.

Storage Buffer

1X Sample Buffer (50 mM Tris-HCl, 2% SDS, 10% glycerol, 300 mM 2-mercaptoethanol, 0.01% Bromophenol blue)

Storage Instruction

Store at -80°C. Aliquot to avoid repeated freezing and thawing.

Applications

- Western Blot

Gene Info — DOC2B

Entrez GeneID[8447](#)**GeneBank Accession#**[BC153024](#)**Protein Accession#**[AAI53025.1](#)**Gene Name**

DOC2B

Gene Alias

-

Gene Description

double C2-like domains, beta

Omim ID[604568](#)**Gene Ontology**[Hyperlink](#)**Gene Summary**

There are at least two protein isoforms of the Double C2 protein, namely alpha (DOC2A) and beta (DOC2B), which contain two C2-like domains. DOC2A and DOC2B are encoded by different genes; these genes are at times confused with the unrelated DAB2 gene which was initially named DOC-2. DOC2B is expressed ubiquitously and is suggested to be involved in Ca(2+)-dependent intracellular vesicle trafficking in various types of cells. [provided by RefSeq]

Other Designations

-

Disease

- [Tobacco Use Disorder](#)