

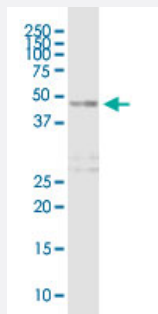
MaxPab®

# DOC2B purified MaxPab mouse polyclonal antibody (B01P)

Catalog # H00008447-B01P

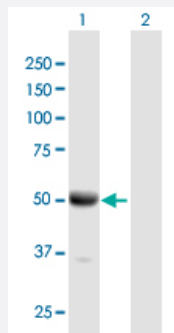
Size 50 ug

## Applications



### Western Blot (Tissue lysate)

DOC2B MaxPab polyclonal antibody. Western Blot analysis of DOC2B expression in human colon.



### Western Blot (Transfected lysate)

Western Blot analysis of DOC2B expression in transfected 293T cell line ([H00008447-T02](#)) by DOC2B MaxPab polyclonal antibody.

Lane 1: DOC2B transfected lysate(45.32 KDa).

Lane 2: Non-transfected lysate.

## Specification

### Product Description

Mouse polyclonal antibody raised against a full-length human DOC2B protein.

### Immunogen

DOC2B (AAI53025.1, 1 a.a. ~ 412 a.a) full-length human protein.

### Sequence

MTLRRRGEKATISIQEHMAIDVCPGPIRPIKQISDYFPRFPRGLPPDAGPRAAAPPDAPARPAVAG  
AGRRSPSDGAREDDDEDVDQLFGAYGSSPGSPGSPARPPAKPPEDEPDADGYESDDCTALG  
TLDFSLLYDQENNALHCTITKAKGLKPMDHNLADPYVKLHLLPGASKANKLRTKTLRNTLNPTWN  
ETLTYGTTDEDMIRKTLRISVCDEDKFRHNEFIGETRVPLKCLKPNHTKTFNICLEKQLPVDKTEDK  
SLEERGRILISLKYSSQKQGLLVGMVCAHLAAMDANGYSDPYVKTYLRPDVDKSKSKHTAVKKKT  
LNPEFNEEFCYEIKHGDIAKKSLEVTWVDYDIGKSNDFIGGVVLGIHAKGERLKHWFDCCLKNKDK  
RIERWHTLTSELPGAVLSD

Host	Mouse
Reactivity	Human
Interspecies Antigen Sequence	Mouse (95); Rat (95)
Quality Control Testing	Antibody reactive against mammalian transfected lysate.
Storage Buffer	In 1x PBS, pH 7.4
Storage Instruction	Store at -20°C or lower. Aliquot to avoid repeated freezing and thawing.

## Applications

- Western Blot (Tissue lysate)

DOC2B MaxPab polyclonal antibody. Western Blot analysis of DOC2B expression in human colon.

[Protocol Download](#)

- Western Blot (Transfected lysate)

Western Blot analysis of DOC2B expression in transfected 293T cell line ([H00008447-T02](#)) by DOC2B MaxPab polyclonal antibody.

Lane 1: DOC2B transfected lysate(45.32 KDa).

Lane 2: Non-transfected lysate.

[Protocol Download](#)

## Gene Info — DOC2B

Entrez GeneID	<a href="#">8447</a>
GeneBank Accession#	<a href="#">BC153024</a>
Protein Accession#	<a href="#">AAI53025.1</a>
Gene Name	DOC2B
Gene Alias	-
Gene Description	double C2-like domains, beta
Omim ID	<a href="#">604568</a>
Gene Ontology	<a href="#">Hyperlink</a>

**Gene Summary**

There are at least two protein isoforms of the Double C2 protein, namely alpha (DOC2A) and beta (DOC2B), which contain two C2-like domains. DOC2A and DOC2B are encoded by different genes; these genes are at times confused with the unrelated DAB2 gene which was initially named DOC-2. DOC2B is expressed ubiquitously and is suggested to be involved in Ca(2+)-dependent intracellular vesicle trafficking in various types of cells. [provided by RefSeq]

**Other Designations**

-

**Publication Reference**

- [Doc2 is a ca\(2+\) sensor required for asynchronous neurotransmitter release.](#)

Yao J, Gaffaney JD, Kwon SE, Chapman ER.

Cell 2011 Oct; 147(3):666.

Application: WB-Ce, WB-Tr, Human, Mouse, HEK 293T cells, Hippocampal neurons

**Disease**

- [Tobacco Use Disorder](#)