

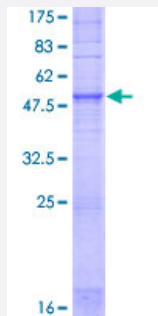
Full-Length

OR1E1 (Human) Recombinant Protein (P01)

Catalog # H00008387-P01

Size 25 ug, 10 ug

Applications



Specification

Product Description

Human OR1E1 full-length ORF (ENSP00000313384, 1 a.a. - 314 a.a.) recombinant protein with GS T-tag at N-terminal.

Sequence

MMGQNQTSISDFLLGLPIQPEQQNLCYALFLAMYLTTLLGNLLIIVLRLDSHLHTPMYFLSNLSFS
DLCFSSVTIPKLLQNMQNQDPSIPYADCLTQMYFFLLFGDLESFLLVAMAYDRYVAICFPLHYTAIM
SPMLCLALVALSWVLTTFHAMLHTLLMARLCFCADNVIPHFFCDMSALLKAFSDTRVNEWVIFIM
GGLILVIPFLLILGSYARIVSSILKVPSSKGICKAFSTCGSHLSVVSFLFYGTVIGLYLCSSANSSTLKDT
VMAMMYTVVTPMLNPFYSLRNRDMKGALSRVIHQKKTFFSL

Host

Wheat Germ (in vitro)

Theoretical MW (kDa)

61.7

Preparation Method

[in vitro wheat germ expression system](#)

Purification

Glutathione Sepharose 4 Fast Flow

Quality Control Testing

12.5% SDS-PAGE Stained with Coomassie Blue.

Storage Buffer

50 mM Tris-HCl, 10 mM reduced Glutathione, pH=8.0 in the elution buffer.

Storage Instruction

Store at -80°C. Aliquot to avoid repeated freezing and thawing.

Note

Best use within three months from the date of receipt of this protein.

Applications

- Enzyme-linked Immunoabsorbent Assay
- Western Blot (Recombinant protein)
- Antibody Production
- Protein Array

Gene Info — OR1E1

Entrez GeneID	8387
GeneBank Accession#	ENST00000322608
Protein Accession#	ENSP00000313384
Gene Name	OR1E1
Gene Alias	HGM071, OR13-66, OR17-2, OR17-32, OR1E5, OR1E6, OR1E8P, OR1E9P, OST547
Gene Description	olfactory receptor, family 1, subfamily E, member 1
Gene Ontology	Hyperlink
Gene Summary	Olfactory receptors interact with odorant molecules in the nose, to initiate a neuronal response that triggers the perception of a smell. The olfactory receptor proteins are members of a large family of G-protein-coupled receptors (GPCR) arising from single coding-exon genes. Olfactory receptors share a 7-transmembrane domain structure with many neurotransmitter and hormone receptors and are responsible for the recognition and G protein-mediated transduction of odorant signals. The olfactory receptor gene family is the largest in the genome. The nomenclature assigned to the olfactory receptor genes and proteins for this organism is independent of other organisms. [provided by RefSeq]
Other Designations	OTTHUMP00000115802 olfactory receptor OR17-18 olfactory receptor OR17-4 olfactory receptor, family 1, subfamily E, member 5 olfactory receptor, family 1, subfamily E, member 6 olfactory receptor, family 1, subfamily E, member 8 pseudogene olfactory recept

Pathway

- [Olfactory transduction](#)

Disease

- [Tobacco Use Disorder](#)