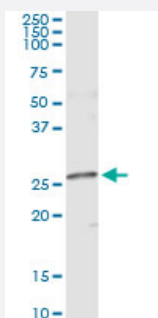


NME5 (Human) IP-WB Antibody Pair

Catalog # H00008382-PW2

Size 1 Set

Applications



Immunoprecipitation of NME5 transfected lysate using mouse monoclonal anti-NME5 and Protein A Magnetic Bead ([U0007](#)), and immunoblotted with rabbit polyclonal anti-NME5.

Specification

Product Description	This IP-WB antibody pair set comes with one antibody for immunoprecipitation and another to detect the precipitated protein in western blot.
Reactivity	Human
Interspecies Antigen Sequence	Mouse (86); Rat (88)
Quality Control Testing	Immunoprecipitation-Western Blot (IP-WB) Immunoprecipitation of NME5 transfected lysate using mouse monoclonal anti-NME5 and Protein A Magnetic Bead (U0007), and immunoblotted with rabbit polyclonal anti-NME5.
Supplied Product	Antibody pair set content: 1. Antibody pair for IP: mouse monoclonal anti-NME5 (300 ug) 2. Antibody pair for WB: rabbit polyclonal anti-NME5 (50 ul)
Storage Instruction	Store reagents of the antibody pair set at -20°C or lower. Please aliquot to avoid repeated freeze thaw cycle. Reagents should be returned to -20°C storage immediately after use.

Applications

- Immunoprecipitation-Western Blot

[Protocol Download](#)

Gene Info — NME5

Entrez GeneID	8382
Gene Name	NME5
Gene Alias	NM23-H5, NM23H5
Gene Description	non-metastatic cells 5, protein expressed in (nucleoside-diphosphate kinase)
Omim ID	603575
Gene Ontology	Hyperlink
Gene Summary	O
Other Designations	-