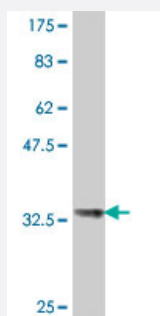


HIST1H4H polyclonal antibody (A01)

Catalog # H00008365-A01

Size 50 uL

Applications



Western Blot detection against Immunogen (34.14 KDa) .

Specification

Product Description	Mouse polyclonal antibody raised against a partial recombinant HIST1H4H.
Immunogen	HIST1H4H (NP_003534, 31 a.a. ~ 103 a.a) partial recombinant protein with GST tag.
Sequence	TKPAIRRLARRGGVKRISGLIYEETRGVLKVFLENVIRDAVTYTEHAKRKTVTAMDVVYALKRQGRT LYGFEGG
Host	Mouse
Reactivity	Human
Quality Control Testing	Antibody Reactive Against Recombinant Protein. Western Blot detection against Immunogen (34.14 KDa) .
Storage Buffer	50 % glycerol
Storage Instruction	Store at -20°C or lower. Aliquot to avoid repeated freezing and thawing.

Applications

- Western Blot (Recombinant protein)

[Protocol Download](#)

- ELISA

Gene Info — HIST1H4H

Entrez GeneID [8365](#)

GeneBank Accession# [NM_003543](#)

Protein Accession# [NP_003534](#)

Gene Name HIST1H4H

Gene Alias H4/h, H4FH

Gene Description histone cluster 1, H4h

Omim ID [602828](#)

Gene Ontology [Hyperlink](#)

Gene Summary Histones are basic nuclear proteins that are responsible for the nucleosome structure of the chromosomal fiber in eukaryotes. Two molecules of each of the four core histones (H2A, H2B, H3, and H4) form an octamer, around which approximately 146 bp of DNA is wrapped in repeating units, called nucleosomes. The linker histone, H1, interacts with linker DNA between nucleosomes and functions in the compaction of chromatin into higher order structures. This gene is intronless and encodes a member of the histone H4 family. Transcripts from this gene lack polyA tails but instead contain a palindromic termination element. This gene is found in the large histone gene cluster on chromosome 6. [provided by RefSeq]

Other Designations H4 histone family, member H|OTTHUMP00000016169|histone 1, H4h

Pathway

- [Systemic lupus erythematosus](#)