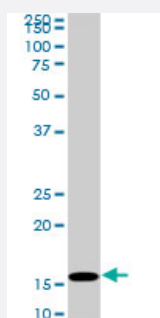


HIST1H3D monoclonal antibody (M01), clone 1D8

Catalog # H00008351-M01

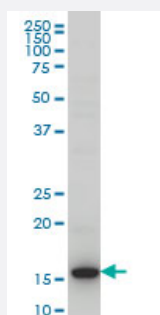
Size 100 ug

Applications



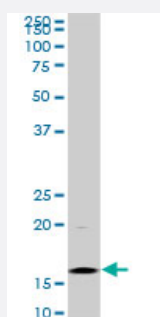
Western Blot (Cell lysate)

HIST1H3D monoclonal antibody (M01), clone 1D8. Western Blot analysis of HIST1H3D expression in Raw 264.7 (Cat # L024V1).



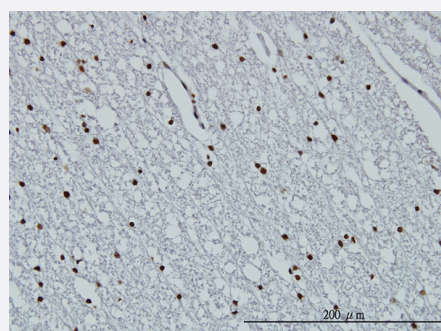
Western Blot (Cell lysate)

HIST1H3D monoclonal antibody (M01), clone 1D8 Western Blot analysis of HIST1H3D expression in Hela S3 NE (Cat # L013V3).



Western Blot (Cell lysate)

HIST1H3D monoclonal antibody (M01), clone 1D8. Western Blot analysis of HIST1H3D expression in NIH/3T3 (Cat # L018V1).

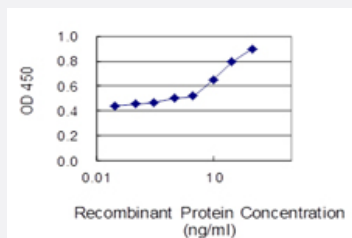


Immunohistochemistry (Formalin/PFA-fixed paraffin-embedded sections)

Immunoperoxidase of monoclonal antibody to HIST1H3D on formalin-fixed paraffin-embedded human lateral ventricle wall. [antibody concentration 3 ug/ml]

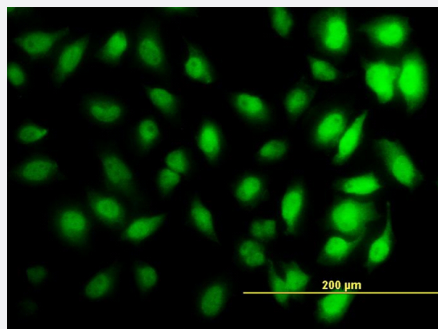
Sandwich ELISA (Recombinant protein)

Detection limit for recombinant GST tagged HIST1H3D is 0.3 ng/ml as a capture antibody.

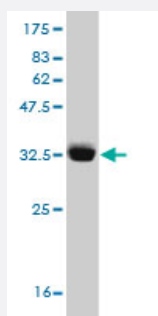


Immunofluorescence

Immunofluorescence of monoclonal antibody to HIST1H3D on HeLa cell. [antibody concentration 10 ug/ml]



Western Blot detection against Immunogen (32.34 KDa) .



Specification

Product Description	Mouse monoclonal antibody raised against a partial recombinant HIST1H3D.
Immunogen	HIST1H3D (NP_003521, 1 a.a. ~ 60 a.a) partial recombinant protein with GST tag. MW of the GST tag alone is 26 KDa.
Sequence	MARTKQTARKSTGGKAPRKQLATKAARKSAPATGGVKKPHRYRPGTVALREIRRYQKSTE
Host	Mouse
Reactivity	Human, Mouse
Interspecies Antigen Sequence	Rat (97)
Isotype	IgG3 Kappa

Quality Control Testing

Antibody Reactive Against Recombinant Protein.
Western Blot detection against Immunogen (32.34 KDa) .

Storage Buffer

In 1x PBS, pH 7.4

Storage Instruction

Store at -20°C or lower. Aliquot to avoid repeated freezing and thawing.

Applications

- Western Blot (Cell lysate)

HIST1H3D monoclonal antibody (M01), clone 1D8. Western Blot analysis of HIST1H3D expression in Raw 264.7 (Cat # L024V1).

[Protocol Download](#)

- Western Blot (Cell lysate)

HIST1H3D monoclonal antibody (M01), clone 1D8 Western Blot analysis of HIST1H3D expression in Hela S3 NE (Cat # L013V3).

[Protocol Download](#)

- Western Blot (Cell lysate)

HIST1H3D monoclonal antibody (M01), clone 1D8. Western Blot analysis of HIST1H3D expression in NIH/3T3 (Cat # L018V1).

[Protocol Download](#)

- Western Blot (Recombinant protein)

[Protocol Download](#)

- Immunohistochemistry (Formalin/PFA-fixed paraffin-embedded sections)

Immunoperoxidase of monoclonal antibody to HIST1H3D on formalin-fixed paraffin-embedded human lateral ventricle wall.
[antibody concentration 3 ug/ml]

[Protocol Download](#)

- Sandwich ELISA (Recombinant protein)

Detection limit for recombinant GST tagged HIST1H3D is 0.3 ng/ml as a capture antibody.

[Protocol Download](#)

- ELISA

- Immunofluorescence

Immunofluorescence of monoclonal antibody to HIST1H3D on HeLa cell. [antibody concentration 10 ug/ml]

Gene Info — HIST1H3D

Entrez GeneID [8351](#)

GeneBank Accession# [NM_003530](#)

Protein Accession# [NP_003521](#)

Gene Name HIST1H3D

Gene Alias H3/b, H3FB

Gene Description histone cluster 1, H3d

Omim ID [602811](#)

Gene Ontology [Hyperlink](#)

Gene Summary

Histones are basic nuclear proteins that are responsible for the nucleosome structure of the chromosomal fiber in eukaryotes. Two molecules of each of the four core histones (H2A, H2B, H3, and H4) form an octamer, around which approximately 146 bp of DNA is wrapped in repeating units, called nucleosomes. The linker histone, H1, interacts with linker DNA between nucleosomes and functions in the compaction of chromatin into higher order structures. This gene is intronless and encodes a member of the histone H3 family. Transcripts from this gene lack polyA tails but instead contain a palindromic termination element. This gene is found in the large histone gene cluster on chromosome 6. [provided by RefSeq]

Other Designations H3 histone family, member B|OTTHUMP00000016149|histone 1, H3d

Publication Reference

- [Protective effect of caffeic acid on paclitaxel induced anti-proliferation and apoptosis of lung cancer cells involves NF-κB pathway.](#)

Lin CL, Chen RF, Chen JY, Chu YC, Wang HM, Chou HL, Chang WC, Fong Y, Chang WT, Wu CY, Chiu CC.

International Journal of Molecular Sciences 2012 May; 13(5):6236.

Application: WB, Human, A-549 cells

Pathway

- [Systemic lupus erythematosus](#)