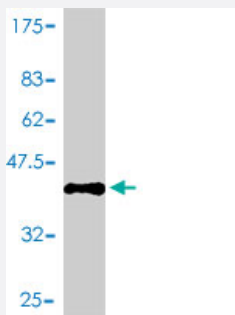


# HIST1H2BC polyclonal antibody (A01)

Catalog # H00008347-A01

Size 50 uL

## Applications



Western Blot detection against Immunogen (39.97 KDa) .

## Specification

<b>Product Description</b>	Mouse polyclonal antibody raised against a full-length recombinant HIST1H2BC.
<b>Immunogen</b>	HIST1H2BC (AAH09612, 1 a.a. ~ 126 a.a) full-length recombinant protein with GST tag.
<b>Sequence</b>	MPEPAKSAPAPKKGSKKAVTKAQKKDGKKRKRSRKESYSVYVKVLKQVHPDTGISSKAMGIMN SFVNDIFERIAGEASRLAHYNKRSTITSREIQTAVRLLLPGELAKHAVSEGTKAVTKYTSSK
<b>Host</b>	Mouse
<b>Reactivity</b>	Human
<b>Quality Control Testing</b>	Antibody Reactive Against Recombinant Protein. Western Blot detection against Immunogen (39.97 KDa) .
<b>Storage Buffer</b>	50 % glycerol
<b>Storage Instruction</b>	Store at -20°C or lower. Aliquot to avoid repeated freezing and thawing.

## Applications

- Western Blot (Recombinant protein)

[Protocol Download](#)

- ELISA

## Gene Info — HIST1H2BC

Entrez GeneID [8347](#)

GeneBank Accession# [BC009612](#)

Protein Accession# [AAH09612](#)

Gene Name HIST1H2BC

Gene Alias H2B.1, H2B/I, H2BFL, MGC104246, dJ221C16.3

Gene Description histone cluster 1, H2bc

Omim ID [602847](#)

Gene Ontology [Hyperlink](#)

**Gene Summary** Histones are basic nuclear proteins that are responsible for the nucleosome structure of the chromosomal fiber in eukaryotes. Two molecules of each of the four core histones (H2A, H2B, H3, and H4) form an octamer, around which approximately 146 bp of DNA is wrapped in repeating units, called nucleosomes. The linker histone, H1, interacts with linker DNA between nucleosomes and functions in the compaction of chromatin into higher order structures. This gene is intronless and encodes a member of the histone H2B family. Transcripts from this gene lack polyA tails but instead contain a palindromic termination element. This gene is found in the large histone gene cluster on chromosome 6. [provided by RefSeq]

**Other Designations** H2B histone family, member L|OTTHUMP00000016141|histone 1, H2bc

## Pathway

- [Systemic lupus erythematosus](#)