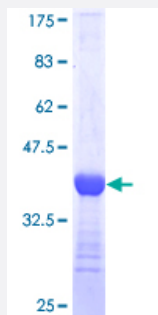


EOMES (Human) Recombinant Protein (Q01)

Catalog # H00008320-Q01

Size 25 ug, 10 ug

Applications



Specification

Product Description	Human EOMES partial ORF (NP_005433, 547 a.a. - 645 a.a.) recombinant protein with GST-tag at N-terminal.
Sequence	PYGIKSLPLQTSHALGYPDPTFPAMAGWGGRGSYQRKMAAGLPWTSRTSPTVFSEDQLSKEKV KEEIGSSWIETPPSIKSLDSNDSGVYTSACKRRRL
Host	Wheat Germ (in vitro)
Theoretical MW (kDa)	36.63
Interspecies Antigen Sequence	Mouse (91)
Preparation Method	in vitro wheat germ expression system
Purification	Glutathione Sepharose 4 Fast Flow
Quality Control Testing	12.5% SDS-PAGE Stained with Coomassie Blue.
Storage Buffer	50 mM Tris-HCl, 10 mM reduced Glutathione, pH=8.0 in the elution buffer.
Storage Instruction	Store at -80°C. Aliquot to avoid repeated freezing and thawing.
Note	Best use within three months from the date of receipt of this protein.

Applications

- Enzyme-linked Immunoabsorbent Assay
- Western Blot (Recombinant protein)
- Antibody Production
- Protein Array

Gene Info — EOMES

Entrez GeneID [8320](#)

GeneBank Accession# [NM_005442](#)

Protein Accession# [NP_005433](#)

Gene Name EOMES

Gene Alias TBR2

Gene Description eomesodermin homolog (Xenopus laevis)

Omim ID [604615](#)

Gene Ontology [Hyperlink](#)

Gene Summary This gene encodes a member of a conserved protein family that shares a common DNA-binding domain, the T-box. T-box genes encode transcription factors involved in the regulation of developmental processes. A similar gene disrupted in mice is shown to be essential during trophoblast development and gastrulation. [provided by RefSeq]

Other Designations eomesodermin|t box, brain, 2