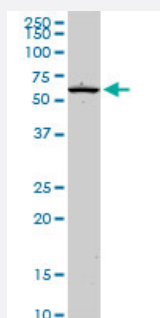


EOMES monoclonal antibody (M14), clone 2D3

Catalog # H00008320-M14

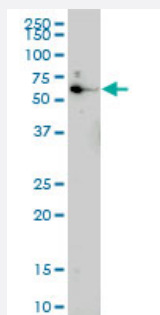
Size 100 ug

Applications



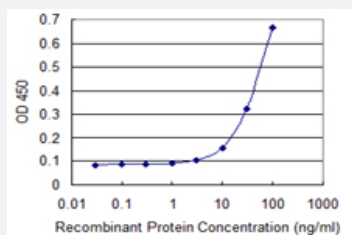
Western Blot (Cell lysate)

EOMES monoclonal antibody (M14), clone 2D3. Western Blot analysis of EOMES expression in PC-12 (Cat # L012V1).



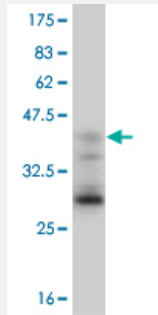
Western Blot (Cell lysate)

EOMES monoclonal antibody (M14), clone 2D3 Western Blot analysis of EOMES expression in IMR-32 (Cat # L008V1).



Sandwich ELISA (Recombinant protein)

Detection limit for recombinant GST tagged EOMES is 3 ng/ml as a capture antibody.



Western Blot detection against Immunogen (37.73 KDa) .

Specification

Product Description	Mouse monoclonal antibody raised against a full length recombinant EOMES.
Immunogen	EOMES (NP_005433.2, 461 a.a. ~ 569 a.a) full-length recombinant protein with GST tag. MW of the GST tag alone is 26 KDa.
Sequence	SHQIVPGGRYGVQSFFPEPFVNTLPQARYYNGERTVPQTNGLLSPQQSEEVANPPQRWLVTPVQ QPGTNKLDISSYESEYTSSTLLPYGIKSLPLQTSHALGYPDPTF
Host	Mouse
Reactivity	Human, Rat
Interspecies Antigen Sequence	Mouse (97)
Isotype	IgG2a Kappa
Quality Control Testing	Antibody Reactive Against Recombinant Protein. Western Blot detection against Immunogen (37.73 KDa) .
Storage Buffer	In 1x PBS, pH 7.4
Storage Instruction	Store at -20°C or lower. Aliquot to avoid repeated freezing and thawing.

Applications

- Western Blot (Cell lysate)

EOMES monoclonal antibody (M14), clone 2D3. Western Blot analysis of EOMES expression in PC-12(Cat # L012V1).

[Protocol Download](#)

- Western Blot (Cell lysate)

EOMES monoclonal antibody (M14), clone 2D3 Western Blot analysis of EOMES expression in IMR-32 (Cat # L008V1).

[Protocol Download](#)

- Western Blot (Recombinant protein)

[Protocol Download](#)

- Sandwich ELISA (Recombinant protein)

Detection limit for recombinant GST tagged EOMES is 3 ng/ml as a capture antibody.

[Protocol Download](#)

- ELISA

Gene Info — EOMES

Entrez GeneID [8320](#)

GeneBank Accession# [NM_005442](#)

Protein Accession# [NP_005433.2](#)

Gene Name EOMES

Gene Alias TBR2

Gene Description eomesodermin homolog (Xenopus laevis)

Omim ID [604615](#)

Gene Ontology [Hyperlink](#)

Gene Summary This gene encodes a member of a conserved protein family that shares a common DNA-binding domain, the T-box. T-box genes encode transcription factors involved in the regulation of developmental processes. A similar gene disrupted in mice is shown to be essential during trophoblast development and gastrulation. [provided by RefSeq]

Other Designations eomesodermin|t box, brain, 2