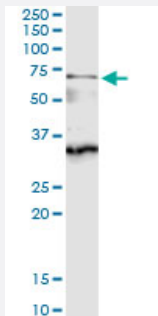


# CDC45L (Human) IP-WB Antibody Pair

Catalog # H00008318-PW2

Size 1 Set

## Applications



Immunoprecipitation of CDC45L transfected lysate using rabbit polyclonal anti-CDC45L and Protein A Magnetic Bead ([U0007](#)), and immunoblotted with mouse purified polyclonal anti-CDC45L.

## Specification

<b>Product Description</b>	This IP-WB antibody pair set comes with one antibody for immunoprecipitation and another to detect the precipitated protein in western blot.
<b>Reactivity</b>	Human
<b>Interspecies Antigen Sequence</b>	Mouse (91); Rat (91)
<b>Quality Control Testing</b>	Immunoprecipitation-Western Blot (IP-WB) Immunoprecipitation of CDC45L transfected lysate using rabbit polyclonal anti-CDC45L and Protein A Magnetic Bead ( <a href="#">U0007</a> ), and immunoblotted with mouse purified polyclonal anti-CDC45L.
<b>Supplied Product</b>	Antibody pair set content: 1. Antibody pair for IP: rabbit polyclonal anti-CDC45L (300 ul) 2. Antibody pair for WB: mouse purified polyclonal anti-CDC45L (50 ug)
<b>Storage Instruction</b>	Store reagents of the antibody pair set at -20°C or lower. Please aliquot to avoid repeated freeze thaw cycle. Reagents should be returned to -20°C storage immediately after use.

## Applications

- Immunoprecipitation-Western Blot

[Protocol Download](#)

## Gene Info — CDC45L

**Entrez GeneID** [8318](#)

**Gene Name** CDC45L

**Gene Alias** CDC45, CDC45L2, PORC-PI-1

**Gene Description** CDC45 cell division cycle 45-like (S. cerevisiae)

**Omim ID** [603465](#)

**Gene Ontology** [Hyperlink](#)

**Gene Summary** The protein encoded by this gene was identified by its strong similarity with Saccharomyces cerevisiae Cdc45, an essential protein required to the initiation of DNA replication. Cdc45 is a member of the highly conserved multiprotein complex including Cdc6/Cdc18, the minichromosome maintenance proteins (MCMs) and DNA polymerase, which is important for early steps of DNA replication in eukaryotes. This protein has been shown to interact with MCM7 and DNA polymerase alpha. Studies of the similar gene in Xenopus suggested that this protein play a pivotal role in the loading of DNA polymerase alpha onto chromatin. Multiple polyadenylation sites of this gene are reported. [provided by RefSeq]

**Other Designations** CDC45 (cell division cycle 45, S.cerevisiae, homolog)-like|CDC45-like|CDC45-related protein|cell division cycle 45-like 2|human CDC45

## Pathway

- [Cell cycle](#)

## Disease

- [Colorectal Neoplasms](#)
- [Disease Progression](#)
- [Genetic Predisposition to Disease](#)
- [Tobacco Use Disorder](#)